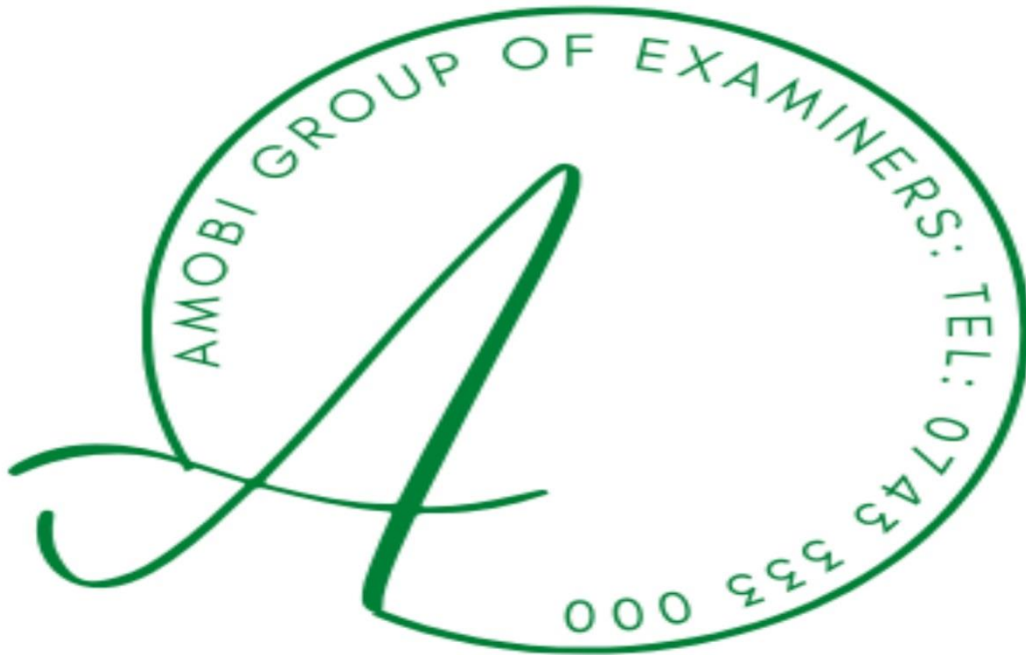


EXCELLING STUDENTS FORM 2 END TERM 1

SERIES 1 EXAMS (13 SUBJECTS TESTED)



EXCELLING STUDENTS FORM 2 END TERM 1 SERIES 1 EXAMS

Prefer Calling Amobi Group of Examiners @

0743 333 000 OR 0706 851 439

For Marking Schemes

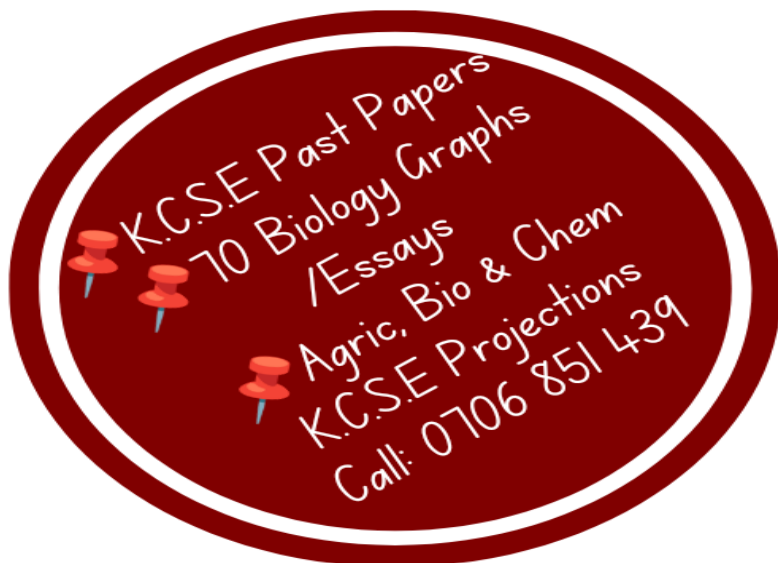
*N/B In Response to the Huge Costs Associated in Coming Up with Such/Similar Resources Regularly, We inform us All, **MARKING SCHEMES ARE NOT FREE OF CHARGE.** However Similar **QUESTIONS**, Inform of **soft Copies**, are Absolutely **FREE** to Anybody/Everybody. Hence **NOT FOR SALE** by Amobi Group of Examiners.*

ORDER OF THE 13 SUBJECTS TESTED

(ALPHABETICALLY ARRANGED)

- 1. AGRICULTURE**
- 2. BIOLOGY**
- 3. BUSINESS STUDIES**
- 4. CHEMISTRY**
- 5. COMPUTER**
- 6. C.R.E**
- 7. ENGLISH**
- 8. GEOGRAPHY**
- 9. HISTORY**
- 10. HOMESCIENCE**
- 11. KISWAHILI**
- 12. MATHS**
- 13. PHYSCIS**

**CALL AMOBI GROUP OF EXAMINERS @
0743 333 000 OR 0706 851 439 TO
ACQUIRE :**



EXCELLING STUDENTS FORM 2 END TERM 1 SERIES 1 EXAMS

NAME:

SCHOOL:

DATE:..... ADM NO: SIGNATURE:.....

AGRICULTURE FORM 2

END OF TERM 1. TIME;

2HRS

INSTRUCTION

- This paper has two section A and B
- Answer all questions in these sections in the spaces provided after the questions.

SECTION A (70MKS)

1. State **two** reasons why farmers should be encouraged to practice organic farming (1mk)

.....
.....
.....
.....

2. State main categories of parasites (1mk)

.....
.....

3. State four importance of water treatment. (2mks)

.....
.....
.....
.....
.....
.....

4. Mention 3 major sources of water on the farm. (3mks)

.....

.....

.....

.....

.....

5. State four ways in which nitrogen is removed from the atmosphere (2mks)

.....

.....

.....

.....

.....

6. State the intermediate hosts of the following parasites. (2mks)

(i) Tapeworm(Taenia spp)

(ii) Liver fluke

7. State 3 forms of soil water. (3mks)

.....

.....

.....

.....

.....

8. State four vector-borne diseases affecting farm animals. (2mks)

.....

.....

.....

.....

.....

9. State the plant part used for vegetative propagation in the following plants. (2mks)

i) Pyrethrum

.....
.....

ii) Sisal

.....
.....

iii) Pineapples

.....
.....

iv) Tea

.....
.....

10. State four pests commonly found in tomatoes. (2mks)

.....
.....
.....
.....
.....

11 State **four** qualities considered when selecting seeds for planting (2mks)

.....
.....
.....
.....
.....

12 State **four** advantages of crop rotation (2mks)

.....
.....
.....
.....

.....
.....
.....
13. State any four post-harvest practices in crop production. (2mks)

.....
.....
.....
.....
.....
.....
.....
.....

14. Differentiate between soil texture and soil structure (2mks)

.....
.....
.....
.....

15. State four factors influencing soil formation. (2mks)

.....
.....
.....
.....
.....
.....
.....

16. List four factors that influence the rate of respiration in an animal. (2mks)

.....
.....
.....
.....
.....
.....
.....

17. State four factors that influence crop rotation (2mks)

.....
.....



.....
.....
.....
.....

18. Give the term used to describe the following livestock. **(4mks)**

- (i) Mature male cattle.....
- (ii) Mature castrated male cattle
- (iii) A mature female pig after first parturition.....
- (iv) Mature female bird

19. Differentiate between gapping and rogueing **(2mks)**

.....
.....
.....
.....

20. State four characteristics of plants used as green manure. **(2mks)**

.....
.....
.....
.....

21. Differentiate between over-sowing and under-sowing. **(2mks)**

.....
.....
.....
.....

22. State four factors that determine spacing in crop production **(2mks)**

.....
.....
.....
.....
.....
.....



23. State four divisions of livestock farming. (2mks)

.....
.....
.....
.....
.....

24. (a) State the two classes of phylum Arthropoda with most ecto- parasites (2mks)

.....
.....
.....

(b) State four characteristics of an effective acaricide (2mks)

.....
.....
.....
.....
.....

(c) Name two types of labour records. (2mks)

.....
.....
.....

(d) Name two minor pests in tomato production (1mk)

.....
.....
.....

25. State the causal organism of the following diseases. (2mks)

a) Mastitis

b) Rinderpest

c) Red water

d) Foot and mouth

26.a) State four methods of fertilizer application

(2mks)

.....
.....
.....
.....
.....

b) Define the term agriculture.

(1mk)

.....
.....
.....

c) State four factors that determine the type of irrigation

(2mks)

.....
.....
.....
.....
.....

d) Differentiate between seed dressing and seed inoculation

(2mks)

.....
.....
.....
.....
.....
.....
.....

27. A) Differentiate between mixed farming and agroforestry

(2mks)

.....
.....
.....
.....
.....

b) State four factors within the animal that may pre-dispose it to a disease.

(2mks)

.....
.....

a) Identify tools O and N

(2mks)

.....

.....

.....

b) State the function of tool P

(1mk)

.....

.....

.....

c) State two maintenance practices of tool Q.

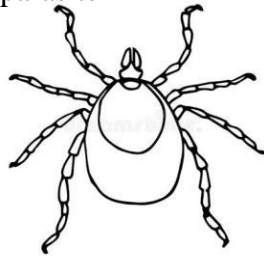
(2mks)

.....

.....

.....

30. The diagram below shows a livestock parasite



a) Identify the above parasite.

(1mk)

.....

.....

b) Name any two diseases transmitted by the parasite.

(2mks)

.....

.....

.....

c) State the four main stages in its life cycle.

(2mks)

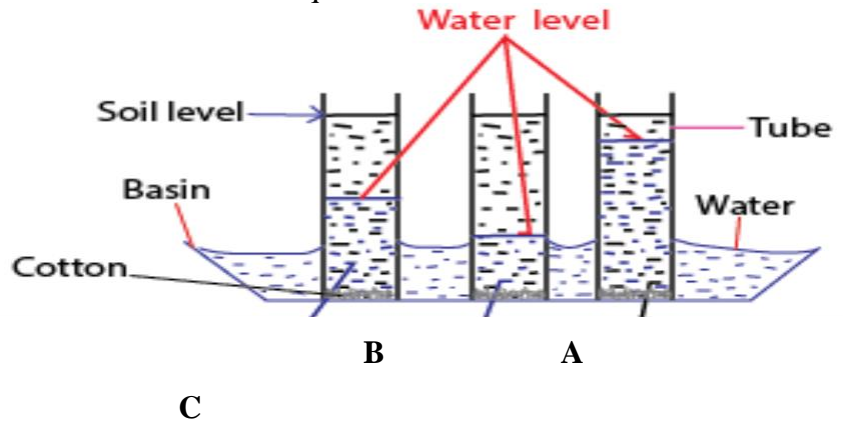
.....

.....

.....

.....

31. Study the diagram below and answer the questions that follow.



a) What is the experiment set up above designed to study. (1mk)

.....
.....

b) Name the three types of soil. (3mks)

.....
.....
.....
.....

c) State 3 characteristics of soil A above. (3mks)

.....
.....
.....
.....
.....

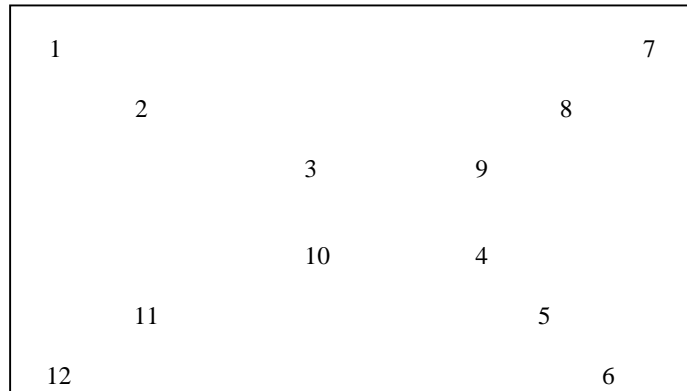
d) State one method of improving soil C above. (1mk)

.....
.....

32(a) What is soil sampling? (1mk)

.....
.....
.....

(b) Below is a method of soil sampling. Use it to answer the question that follow.



(i) What method of soil sampling is represented above? (1mk)

.....

.....

(ii) Name the other method of soil sampling (1mk)

.....

.....

(iii) Outline **four** areas which should be avoided during soil sampling. (4mks)

.....

.....

.....

.....

.....

.....

EXCELLING STUDENTS FORM 2 END TERM 1 SERIES 1 EXAMS

NAME:

SCHOOL:

DATE:..... ADM NO: SIGNATURE:.....

FORM 2

BIOLOGY

INSTRUCTIONS

1. All Questions are Compulsory
2. Write your Answers in the Spaces Provided
3. Wrong Spelling of Technical Terms shall be Penalized

Max Score	Student's Score
80	

1. State the functions of the following vacuoles (2mks)

i) Sap vacuole

.....
.....

ii) Contractile vacuole

.....
.....

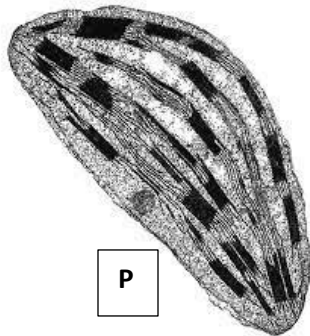
2.a) State TWO reasons why in experiments to study photosynthesis, plants are placed near source of light (2mks)

.....
.....
.....

.....
.....
.....
b) Explain how photosynthesis helps to ensure proper balance of components of air in the atmosphere (2mks

.....
.....
.....
.....
.....

3. The following are photomicrographs of organelles from a living cell



a) Identify organelle Q (1mk

b) Which letter represent an organelle that is abundant in the following cells: (2mks

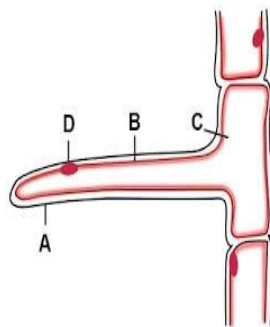
i) Muscle

ii) Palisade.....

c) How is organelle P important to metabolic reactions in organelle Q? (2mks

.....
.....
.....
.....

4. Use the diagram shown below to answer questions that follow



a) Name the specialized cell shown above

(1mk)

.....

.....

b) How do the following help the cell in its functions?

(2mks)

i) Components of part C

.....

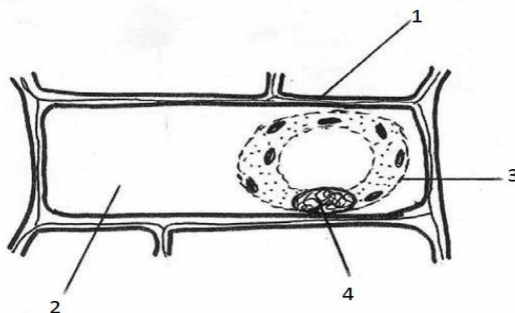
.....

ii) Part A being elongated

.....

.....

5. The appearance of a plant cell after being placed in Solution Q is as shown below



a) Solution Q was later found in part 2. Name the process that allowed its entry?

(1mk)

.....

.....

b) Account for the appearance of the cell

(3mks)

.....

.....

.....

.....

c) Explain how the cell shown can be made to resume its normal appearance

(1mk)

.....

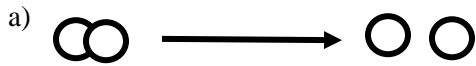
.....

.....

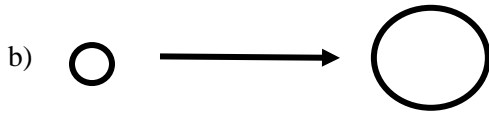
.....

6. Identify the functions of a light microscope as shown by the following diagrams

(2mks)

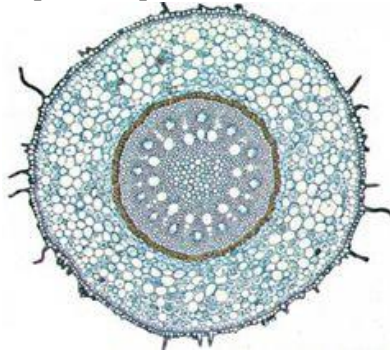


Function



Function

7. The following is a cross-section of part of a plant



Samwel observed that this diagram represents a monocot root. Give a reason why

i) It is a root

(1mk)

.....
.....

ii) It is from a monocot plant

(1mk)

.....
.....

8.a) Outline **TWO** properties of the plasma membrane

(2mks)

.....
.....
.....

b) Arrange the following from the most complex to the simplest: Organ, Organism, Cell, Organ system, Organelle, Tissue

(1mk)

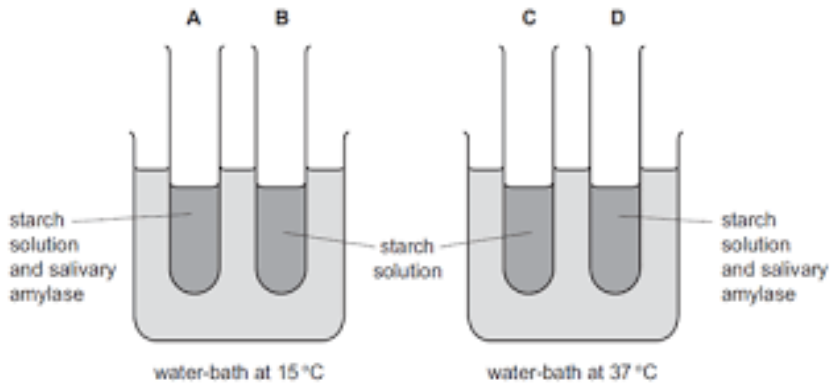
.....
.....

9. Give **TWO** functions of Hydrochloric acid in the stomach

(2mks)

.....
.....

10. The experimental set up shown below was left to stand for 1 hour



a) What was the aim of the experiment?

(1mk)

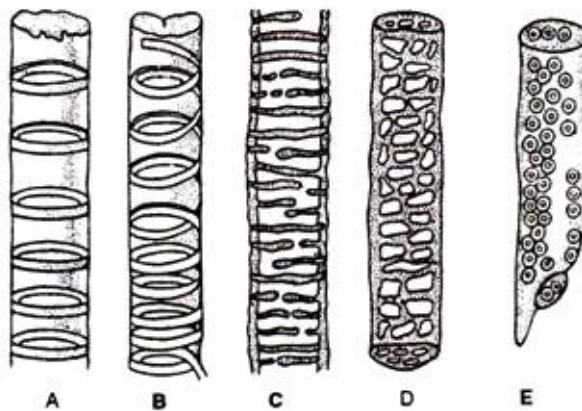
b) Which two test tubes acted as control experiments?

(1mk)

c) Account for the results when Iodine test is carried out on test tube D

(2mks)

11. The following are patterns of lignification of a tissue found in flowering plants



c) One easily suffers nose bleeding when climbing mountain

.....
.....

d) A camel can stay for 60 days without drinking water

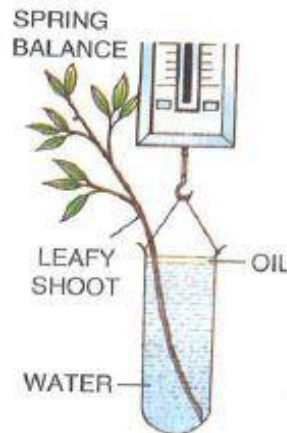
.....
.....

14. Give functions of each component of saliva

(3mks)

.....
.....
.....
.....

15. The following set up was placed in the sunshine for 1 hour to study a physiological process



a) What was the role of oil in the set up?

(1mk)

.....
.....

b) Account for observation made after 1 hour

(2mks)

.....
.....
.....

16. Distinguish between Systemic circulation and Pulmonary circulation

(2mks)

.....
.....
.....
.....

17. How do the following factors increase rate of diffusion?

(2mks)

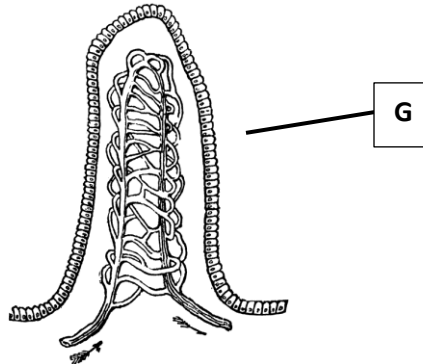
a) Larger surface area to volume ratio

.....
.....
.....

b) High temperature

.....
.....
.....

18. Use the structure shown below to answer questions that follow



a) Give the name and function of the structure shown above

(2mks)

Name:

Function:

b) How does part G adapt the structure to its function?

(1mk)

.....
.....
.....

19. State the importance of the following parts to the functioning of the heart

(2mks)

a) Interventricular septum

.....
.....
.....

b) Tricuspid valves

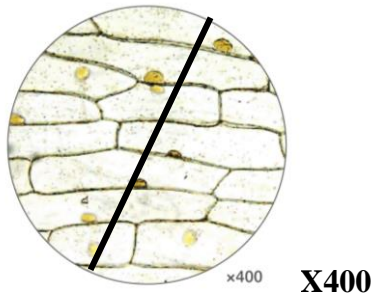
.....
.....
.....

20. Give **THREE** importance of transpiration to plants

(3mks)

.....
.....
.....
.....
.....

21. The diagram below shows onion cells in a field of view of a light microscope



Using the dark line as diameter of field of view, determine the actual diameter of one cell

(4mks)

22. Why do the following have a higher energy demand?

(2mks)

a) Children

.....
.....

b) Males

.....
.....

23. a) Name the following that are required during the process of blood clotting

(2mks)

i) Mineral Ion

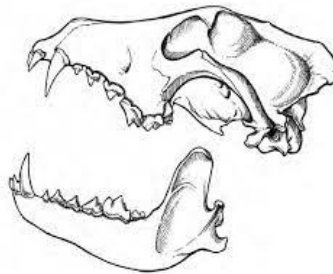
ii) Vitamin

b) State **TWO** ways in which blood clotting is important to the human body

(2mks)

.....
.....
.....
.....

24. Use the diagram shown to answer the questions that follow



a) Identify the mode of feeding for the animal with the dentition shown above

(1mk)

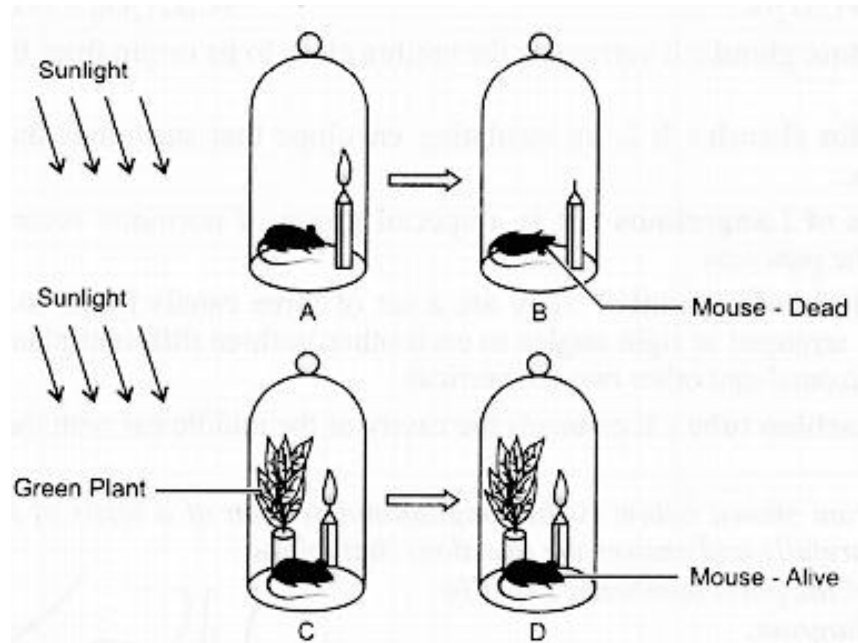
.....
.....

b) Why do such animals with the dentition shown have a shorter alimentary canal?

(2mks)

.....
.....
.....
.....

25. Consider the set ups shown below where **B** and **D** are results of the experiment **A** and **C** respectively which had been placed in the sunshine for 3 hours



Explain why:

i) The Mouse died in B

(2mks)

.....

.....

.....

.....

ii) The Mouse was alive in D

(2mks)

.....

.....

.....

.....

EXCELLING STUDENTS FORM 2 END TERM 1 SERIES 1 EXAMS

NAME:

SCHOOL:

DATE:..... ADM NO: SIGNATURE:.....

BUSINESS STUDIES FORM TWO

TIME: 2 HRS

1.Highlight four ways in which business studies may be of benefit to an individual. (4Mks)

.....
.....
.....
.....
.....
.....
.....
.....

2. State FOUR reasons why consumers satisfy basic wants before secondary wants (4mks)

.....
.....
.....
.....
.....
.....
.....
.....

3.Jitegemeo, a very young entrepreneur would like to start a business in Makadara center. Outline four factors that would show the existence of a business opportunity within the center (4mks)

.....
.....
.....
.....
.....
.....
.....
.....

4.Highlight four ways in which ethical practices in business ensures that consumers are not exploited (4mks)

.....
.....

.....
.....
9. Outline **four** characteristics of a chain store.

.....
.....
.....
.....
.....
.....
.....

10. The following are types of internal and external environments Technological, Business structure, Demographic and physical.

In the table below , write the type of environment that suits the description. **(4mks)**

- i) A duty roster of workers in an organization
- ii) An increase in demand of an organizations product as a result of an increase in population.
- iii) An organization engaging the services of G4 Security.
- iv) Use of e-commerce in the marketing of the organization’s product.

11. Mention four circumstances under which verbal communication would be used in an organization. **(4mks)**

.....
.....
.....
.....
.....
.....
.....

12. Highlight **FOUR** circumstances under which a seller would require a buyer to pay cash with order. (C.W.O)

.....
.....
.....
.....
.....
.....



.....
.....
13. Give four factors that may make a manager to hire rather than buy a new office equipment. (4Mks)

.....
.....
.....
.....
.....
.....
.....
.....

14. Highlight three features of indirect production (3Mks)

.....
.....
.....
.....
.....
.....
.....
.....

15. Highlight four reasons why a person may prefer to run a business as a sole proprietor (4Mks)

.....
.....
.....
.....
.....
.....
.....
.....

16. Explain five characteristics of economic resources. (5mks)

.....
.....
.....
.....
.....
.....
.....
.....



17. Draw five differences between a public limited company and a partnership.

(5Mks)

.....

.....

.....

.....

.....

.....

.....

18. Explain five services that retailers render to consumers.

(5mks)

.....

.....

.....

.....

.....

.....

.....

19. Milele Enterprises would like to partition its office. Explain **five** benefits the firm may get if it uses the enclosed office plan.

.....

.....

.....

.....

.....

.....

.....

EXCELLING STUDENTS FORM 2 END TERM 1 SERIES 1 EXAMS

NAME:

SCHOOL:

DATE:..... ADM NO: SIGNATURE:.....

CHEMISTRY (233)

FORM TWO (2)

TIME: 2 HOURS

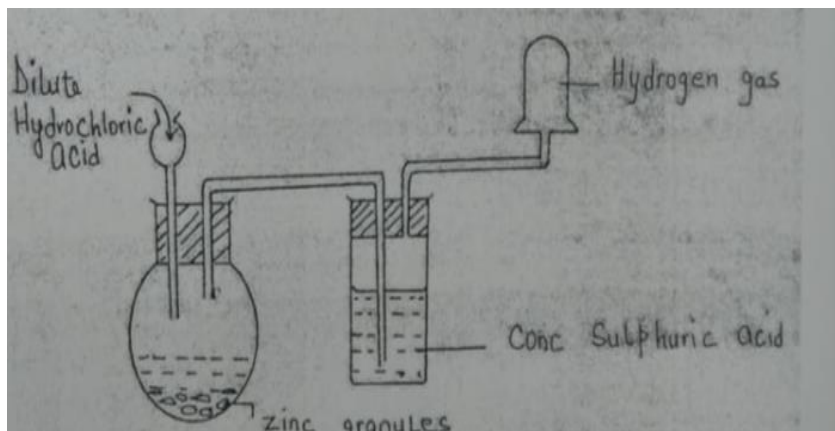
INSTRUCTIONS TO THE CANDIDATES:-

- Write your **Name** and **Admission number** in the spaces provided.
- Answer **all** the questions in the spaces provided.
- All working **MUST** be clearly shown where necessary.

For Examiner's Use Only

Question	Maximum score	Candidate's score
1-20	80	

1. The diagram below shows the set up used to prepare dry hydrogen gas in laboratory. Study and answer questions that follow.



a) State one mistake in the set-up

(1mk)

.....

.....

.....

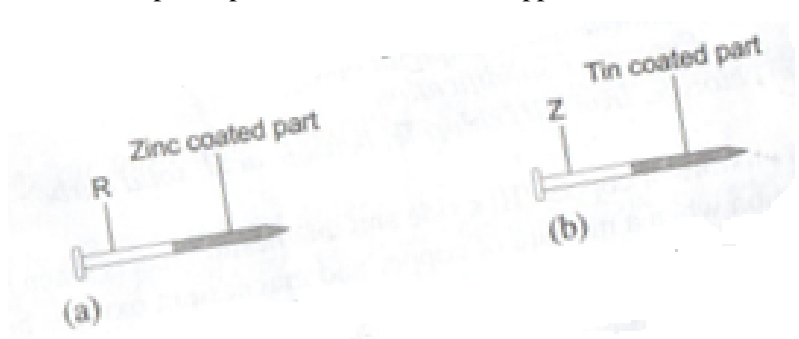
b) Which property of hydrogen that enable it to be collected as shown in the diagram? (1mk)

.....
.....

c) Write a chemical equation for the reaction taking place in the flask. (1mk)

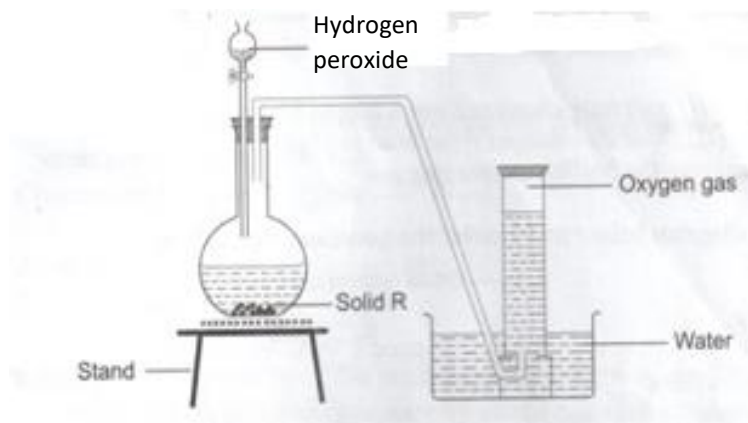
.....
.....
.....

2. The diagrams below represent two iron nails with some parts covered tightly with zinc and tin respectively. What observations would be made at the exposed points R and Z if the wrapped nails are left in the open for several days? Explain. (2mks)



.....
.....
.....
.....

3. The Diagram below is set-up for the laboratory preparation of oxygen gas.



a) Name solid R (1mk)

.....
.....

b) Write an equation for the reaction that takes place in the flask. (2mks)

.....

.....

.....

c) Give two commercial use of oxygen. (2mk)

.....

.....

.....

4. An element y has an electron arrangement of 2.8.5

a) State the period and group which the element belongs. (2mks)

.....

.....

.....

b) Write the formula of the most stable ion formed when the element Y ionizes (1mk)

.....

.....

c) Explain the difference between the atomic radius of element Y and its ionic radius (2mks)

.....

.....

.....

.....

5. Lithium has two isotopes with mass numbers 6 and 7. If the R.A.M (relative atomic mass) of Lithium is 6.94, determine the percentage abundance of such isotope. (2mks)

.....

.....

.....

.....

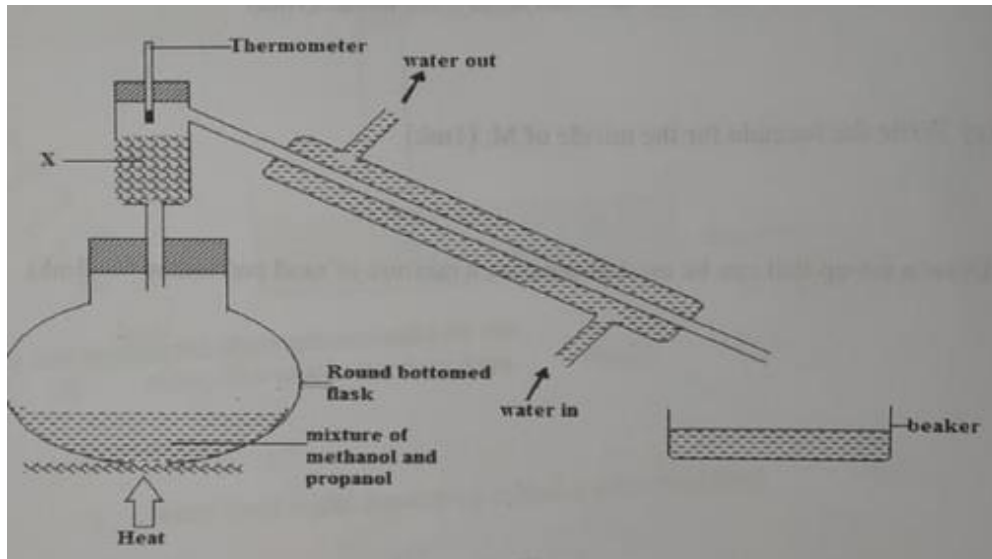
6. Other than their location in the atom, name two other differences between an electron and a proton. (2mks)

.....

.....

.....

.....
.....
.....
7. The diagram below was used to separate a mixture of methanol and propanol. Study it and answer the questions that follows



a) State the function of X 1mk

.....
.....

b) Which liquid will collect first in the beaker? Give reason 2mks

.....
.....
.....
.....

c) What would happen if water in and water out directions are reversed? Explain (2mk)

.....
.....
.....
.....

8. Briefly explain the following observations.

a) Noble gases are generally unreactive. (1mk)

.....
.....

.....
.....
b) Alkaline earth metals are generally less reactive than alkali metals in the same period. 2mks

.....
.....
.....
.....
.....
.....
9. Given below are pH values of different solutions **P**, **Q** and **S**. Study it and answer the questions that follow.

Solution	pH
P	1
Q	7
S	14

a) Which **two** solutions would react together to give a solution with a pH of 7.0? (2mk)

.....
.....
.....
.....
.....
.....
b) Which solution can be considered to be an oxide of hydrogen? (1mk)

.....
.....
.....
.....
.....
.....
10. Nitrogen, oxygen and argon are obtained from the air using fractional distillation of air. Dust, carbon (IV) oxide and water vapour are removed from the air before fractional distillation is carried out.

(i) Name the compound used to absorb carbon (IV) oxide gas from the air (1mk)

.....
.....
.....
.....
.....
.....
(ii) Explain how water vapour is removed from the air (2mks)

(iii) At what temperature are the gases liquefied?

(1mk)

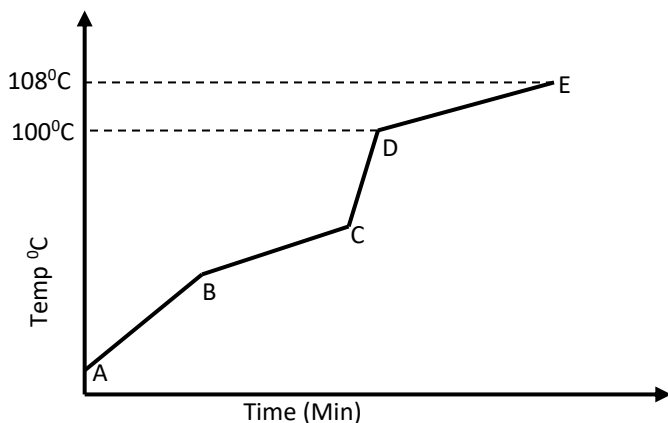
.....
.....

(iv) The boiling points of nitrogen, oxygen and argon are -196, -183 and -186 respectively. State the order in which the three are distilled off starting with the first to be distilled off.

(1mk)

.....
.....
.....

11. Study the diagram shown below to answer the questions that follow. The curve shows the heating curve of water in the laboratory.



(i) At what temperature does the water boil?

(1mk)

.....
.....
.....

(ii) Is the curve for a pure water or impure water? Give a reason for your answer

2mks

.....
.....
.....
.....

(iii) Give two effects of impurities on the boiling point of water

2mks

.....
.....
.....
.....

(iv) Give two effects of impurities on the melting point of ice

2mks

.....
.....
.....
.....

12. Excess magnesium ribbon sample was heated in equal volumes of:-

(i) Pure oxygen gas

(ii) Air

(a) Why was the mass of the resulting product in (ii) more than in (i)?

2mks

.....
.....
.....
.....

(b) Write the chemical equations for the reactions in part (ii)

2mks

.....
.....
.....
.....

13. Excess iron fillings were allowed to rust in 1000cm³ of moist air and the volume of the remaining air was measured each day as shown in the table below

Day	0	1	2	3	4	5	6	7	8
Volume of air cm ³	1000	950	900	860	840	820	800	800	800

(a) Why did the volume of air remain constant from day six?

2mks

.....
.....
.....
.....

(b) Determine the percentage of oxygen in air using the data given in the table.

2mks

14. Give two reasons why air is a mixture but not a compound.

2mks

.....

.....

.....

.....

15. The table below shows some properties and electronic arrangements of common ions of elements represented by letters P to X. Study the information in the table and answer the questions that follow

Element	Ion	Electron arrangement	Atomic radius	Ionic radius
P	P ²⁺	2,8,8	0.197	0.099
Q	Q ⁻	2,8	0.072	0.136
R	R ⁺	2,8,8	0.231	0.133
S	S ³⁺	2,8	0.143	0.050
T	T ²⁺	2,8,8	0.133	0.074
U	U ²⁺	2,8	0.160	0.065
V	V ⁺	2,8	0.186	0.095
W	W ⁺	2	0.152	0.060
X	X ⁻	2,8,8	0.099	0.181

i.) Give the atomic numbers of the elements P and Q

2mks

.....

.....

.....

ii.) Select the most reactive metallic element

(1mk)

.....

.....

iii.) Select one element that would react with cold water to evolve hydrogen gas

(1mk)

.....

.....

iv.) Why is the ionic radius of element X larger than its atomic radius?

(1mk)

.....

.....

.....

.....

16. Observe the equation below



i) Balance the equation (1mk)

.....

.....

ii) Select the following from the above equation (1mk)
Oxidizing agent

.....

Reducing agent (1mk)

.....

iii) State two situations where redox reactions are applied in industry (2mks)

.....

.....

.....

17. Carbon (IV) sublimes at -78°C. It is called dry ice

a) Why is it called dry ice? (1mk)

.....

.....

b) It is used for keeping ice cream cold. Why is it preferred to ordinary ice? (2mks)

.....

.....

.....

c) Name two other substances that behave as dry ice (1mks)

.....

.....

.....

d) Give an industrial application of sublimation (1mks)

.....

.....

.....

18. a) Element X has two isotopes. Two thirds of $^{33}_{16}\text{X}$ and one-third $^{30}_{16}\text{X}$. What is the relative mass of element X? (2mks)

.....
.....
.....
.....

b) An element, A, has 30 protons and 35 neutrons. What is;

i) The mass number of element A?

1mk

.....
.....

ii) What is the atomic number of element A?

1mk

.....
.....

19. A piece of sodium metal was placed in a trough half filled with cold water. State the observations that were made.(3mks)

.....
.....
.....
.....

20. The grid below shows part of the periodic table. Use it to answer the questions that follow.

						S	U	V
P	R		X			T		W
Q								

a.) Which of the elements has the largest atomic radius? Explain

(2mks)

.....
.....
.....

b) Identify the most reactive metal. Explain

(2mks)

.....
.....
.....

EXCELLING STUDENTS FORM 2 END TERM 1 SERIES 1 EXAMS

NAME:

SCHOOL:

DATE:..... ADM NO: SIGNATURE:.....

451/1

COMPUTER STUDIES

FORM TWO

INSTRUCTIONS TO CANDIDATES:

QUESTIONS	MAX SCORE	Score
A	100	

1.State **two** practices to be observed in order to ensure the safety of the computer user. (2mks)

.....
.....
.....

2. State the function of the following keys on the computer key board (2mks)

(a) Insert

.....
.....

(b)Delete

.....
.....

3. Define portability as used in software selection. (1mk)

.....
.....
.....

4. List **four** ways of acquiring software in an organization. (4mks)

.....
.....

.....
.....
.....
.....
.....
.....
.....
.....
.....
.....
(b)The secretary wanted to create a folder to store a memo in Fraud folder. State the path for that folder. **(2mks)**

.....
.....
.....
.....
.....
.....
.....
.....
.....
.....
(c) Suggest how the secretary can ensure that the work in that flash disk is not spoiled. **(1mk)**

.....
.....
.....
.....
.....
.....
.....
.....
.....
.....
(d) The content of the file is not viewed by any other person apart from her. **(1mk)**

.....
.....
.....
.....
.....
.....
.....
.....
.....
.....
9. List two devices under the control of the operating system. **(2mks)**

.....
.....
.....
.....
.....
.....
.....
.....
.....
.....
10. Differentiate between interrupt and deadline. **(2mks)**

.....
.....
.....
.....
.....
.....
.....
.....
.....
.....
11. Define the term scanning. **(1mk)**

21. State **four** features of fifth generation computers. [4mks]

.....

.....

.....

.....

.....

.....

22. State **two** differences between function keys and special keys of a keyboard. [4mks]

.....

.....

.....

.....

.....

.....

23. List **three** differences between laser printer and a dot matrix printer. [3mks]

.....

.....

.....

.....

.....

24. Name an input or output device used in the following tasks. (4mks)

- a) Capturing still images _____
- b) Printing detailed architectural designs _____
- c) Playing flight and driving games _____
- d) Capture data at ATM _____

25. What is the use of the search and replace feature in a word-processor. (2mks)

.....

.....

.....

.....

26. Explain how a computer may be used in efficient running of a hospital. (2mks)

.....

.....



.....
.....
13. State the function of drop cap in a document.

(1mk)

.....
.....
14. Describe **two** types of drop cap.

(4mks)

.....
.....
15. Give **three** classification of operating system.

(3mks)

EXCELLING STUDENTS FORM 2 END TERM 1 SERIES 1 EXAMS

NAME:

SCHOOL:

DATE:..... ADM NO: SIGNATURE:.....

CRE

FORM TWO

QUESTION PAPER

TIME 2HR

INSTRUCTIONS: Answer **ALL** questions

1. (a) List seven minor prophetic books of the bible (7mks)

.....

.....

.....

.....

.....

.....

.....

.....

.....

.....

.....

.....

.....

.....

.....

.....

.....

.....

.....

.....

.....

.....

(b) State ways in that God prepared Moses for his future role as a leader. (8mks)

.....

.....

.....

.....

.....

.....

.....

.....

.....

.....

.....

.....

.....

.....

.....

.....

.....

.....

.....

.....

.....

.....



.....
.....
.....
.....

c) Give six ways in which king Saul failed as king of Israel. (6mks)

.....
.....
.....
.....
.....
.....
.....
.....
.....

2 a) Give seven responsibilities of the living towards God (7mks)

.....
.....
.....
.....
.....
.....
.....
.....
.....
.....
.....

b) Explain seven functions of kinship ties in African society. (7mks)

.....
.....
.....
.....
.....
.....



.....
.....
.....
.....

c) State six requirements that one has to fulfil to be made an elder in Traditional African Society. (6mks)

.....
.....
.....
.....
.....
.....
.....
.....
.....
.....
.....
.....
.....
.....
.....

3 a) Describe Jeremiah’s prophecies about the Messiah (8mks)

.....
.....
.....
.....
.....
.....
.....
.....
.....
.....
.....
.....
.....
.....
.....

b) State the Jewish expectation concerning the messiah (7mks)

.....
.....
.....
.....



.....

.....

.....

.....

.....

.....

.....

c) State five titles given to the Messiah by prophet Isaiah (5mks)

.....

.....

.....

.....

.....

.....

.....

.....

.....

.....

.....

4a) State similarities in the annunciation of the birth of John the Baptist and that of Jesus (6mks)

.....

.....

.....

.....

.....

.....

.....

.....

.....

.....

.....

b) Outline Zechariah prophecy about John the Baptist in the Benedictus. (8mks)

.....

.....

.....

.....

.....

.....

.....



.....
.....
.....
.....

c) State the virtues needed by Christians to inherit the kingdom of God from the preaching of John the Baptist (6mks)

.....
.....
.....
.....
.....
.....
.....
.....
.....
.....

5 a) With reference to the visit of the angel Gabriel to Mary state Six revelations about Jesus. (6mks)

.....
.....
.....
.....
.....
.....
.....
.....
.....
.....
.....
.....
.....
.....
.....
.....
.....
.....
.....
.....
.....

b) Describe the visit of the Angel of the Lord to the shepherds on the night Jesus was born. (8mks)

.....
.....
.....
.....
.....
.....
.....
.....



.....

.....

.....

.....

.....

c) State six lessons a childless couple learn from Zechariah and Elizabeth. **(6mks)**

.....

.....

.....

.....

.....

.....

.....

.....

.....

.....



EXCELLING STUDENTS FORM 2 END TERM 1 SERIES 1 EXAMS

NAME:

SCHOOL:

DATE:..... ADM NO: SIGNATURE:.....

ENGLISH (101)

FORM TWO (2)

TIME: 2 HOURS

INSTRUCTIONS TO CANDIDATES

- Answer ALL the questions in this question paper
- ALL your answers must be written in the spaces provided in this question paper.

Question	Maximum Score	Candidates Score
1	20	
2	10	
3	20	
4	20	
TOTAL	70	

Q.1 COMPREHENSION (20 MARKS)

Read the comprehension below and answer the questions that follow

Quality milk production begins with feeding your dairy animals good fodder to using clean milking equipment. However, while many farmers adhere to the two factors for maximum profit, they forget about offering proper care to the cow's teats.

Teat management remains a key factor in maintaining the well-being of any dairy animal as it ensures the teats are disease-free. As such, teats must be kept clean and healthy to reduce risks of infection and milk contamination. Well managed teats are free of mud, dung and damaged tissues or sores. Teats can be infected due to poor handling during milking, particularly

when using hands, using faulty milking machines, injuries, muddy and wet surroundings, over exposure to direct sunlight causing sunburn and viral and bacterial attacks.

Proper cleaning involves washing every teat with water and drying using paper towels, mainly before and after milking. Low pressure running or flowing water and use of disposable towels provide the most efficient ways to effectively clean the teats. The disposable towels minimize the risk of transferring infections to other teats supposing one is infected. Dry, clean piece of cotton cloth / towel can also be used, but they're not encouraged due to hygiene reasons. If they are the only option, then strictly use one piece per animal, wash and rinse with an effective disinfectant after every milking exercise.

Before milking, teats should be wiped completely dry to reduce chances of mastitis and milk contamination. In machine milking, dry teats will hold better onto the teat cups resulting to efficient milking and less damage. Where hand milking is done, the milkers nails should be short to reduce the chances of causing cuts on the teats and hands should be thoroughly washed and disinfected. As part of exercise, massage the teat and udder to stimulate milk let-down reflex resulting in faster flow of milk. After milking, apply milking salve then dip each teat in dip-cup to help control bacterial infections like mastitis. Sometimes the teats can be coated with mud or dung, in this case, use running water as you rub them gently until the dirt comes off. Then dry with towel.

While machine milking is 'digital', efficient and time saving, it might not turn out positive in the end if not properly employed. If any of your milking cows experience blueing or swelling of the teat ends, horizontal rings along the teats, teat ends pulling out or teat orifice damage, check out your machine. These may be due to defective machine pulsation, persistent excessive vacuum or incompatible liner and shell combinations. Emerging blackspots on the teats may be due to over-milking or faulty pulsation that makes the teat's orifice ulcerated. Cracked teats call for application of milking salve that contains lanolin and some healing ingredients.

A cow experiencing pain on teats during milking is a sign of a problem that should be monitored and the issue resolved immediately. Open wounds or cracks along the teats can be treated using pain relieving ointments. Iodine based sprays and ointments are the most effective. Simple bandaging may be required in cases where the cuts are severe but with the help of a qualified veterinarian. During such treatments, always wear gloves and adhere to the expiry dates of drugs. Expired drugs or ointments only worsen the conditions.

If you are to minimize damage on teats, then provide adequate sleeping space with soft bedding material. Beddings that are wet or soiled promote bacterial build up thus expose the animal to infections. Clipping or removing by shaving the excess hair around the udder and close to the teats also helps to reduce the harbouring of infectious agents and excess dirt on the teats. The animal's tail switch should also be trimmed regularly to reduce soiling the teats.

Ensure your milking machine is fully serviced more than once a year for effective functioning and removal of hidden dirt. Prompt replacement of defective parts is also recommended as per the manufacturer's instructions. Also set right the correct working condition, like the vacuum level. Good drainage system in the animal unit is necessary to reduce accumulation of mud. Visual assessment of teats frequently also helps to quickly detect problems.

If teats are well managed, then you will not have a problem with the quality of your milk. This goes hand in hand with thorough cleaning and disinfection of all the milking apparatus. There is also reduced chance of mastitis and teats damage, translating to less issues related to poor animal health.

When teats have problems it means more time is spent on washing them and milking the cow. Buying veterinary drugs or seeking the support of a veterinarian further add up on medical costs. There is also increased chances of calf sickness by suckling from infected teats. High labour input and reduced animal longevity due to teat diseases definitely eat into farmer's profit.

(a) What are the two factors many farmers adhere to for maximum production? **(2mks)**

.....

.....

.....

.....

.....

(b) In note form, state how teats can be infected. **(4mks)**

.....

.....

.....

.....

.....

.....

(c) Why do you think that the teats must be well dried before milking? **(2mks)**

.....

.....

.....

.....

(d) According to the passage, what may cause injury to teats? **(2mks)**

.....

.....

.....

.....

(e) Mention three things the farmer should do to minimize damage on teats. (3mks)

.....

.....

.....

.....

.....

(f) State the disadvantages associate with teat problems. (4mks)

.....

.....

.....

.....

.....

(g) “Before milking, teats should be wiped completely dry to reduce chances of mastitis and milk contamination.” Rewrite adding a question tag. (1mk)

.....

.....

.....

(h) Explain the meaning of the following words as used in the passage. (2mks)

(i) orifice

.....

.....

.....

(ii) disinfected

.....

.....

.....

Q.2. CLOZE TEST (10MKS)

You must have heard that you should love your neighbour. But before you can love(1), you must first love yourself. Do you?

Most of us (2)do not take the time to get to know ourselves or take the time to nurture our souls. If you analyse your actions, you will agree that at one time you must have been self-conscious (3) the way you look or the way you dress or talk. These actions and thoughts actually are a clear (4) of how you feel about yourself.

What is that? You are very insecure; you are not very confident and you are not taking good care of yourself by loving yourself. Additionally, when you do not love yourself, you are so self-conscious that you forget what is

(5) around you and you become dissatisfied. The focus of this article is self-love, featuring ways to fall in love with yourself and how to (6) that love. So, what is love? According to the dictionary, love is (7) strong passionate affection for another person. When you analyse that definition, it states that you must have a very strong liking (8) that person if you love them. Additionally, when you like that person you would do anything for them.

Of course, it is a (9) process to love yourself all the time, since we all need constant reminders as well as constant feedback that we are good people. Therefore, the best reminder you can give yourself each and every day is to ensure that you (10) yourself for who you are and also make sure that you are confident about who you are.

Q.3 Read the following poem and answer the questions that follow.

(20mks)

A child is like a rare bird.

A child is precious like coral.

A child is like brass.

You cannot buy a child in the market.

Not for all the money in the world.

The child you can buy for money is a slave.

We may have twenty slaves.

We may have thirty labourers,

Only a child brings us joy.
One's child is one's child.
The buttocks of our child are not so flat
That we should tie the beads on another child's hips
It may have a watery head or a square head.
One's child is ones child.
It is better to leave behind a child
Than let the slaves inherit one's house.
One must not rejoice too soon over a child.
Only the one who is buried by his child,
Is the one who has truly borne a child.
On the day of our death, our hand cannot
hold a single cowry.
We need a child to inherit our belonging.

Questions

1. Explain what the poem is about. (2mks)

.....
.....
.....
.....

2. Who is speaking in the poem? (2mks)

.....
.....
.....
.....

3. Identify three reasons given in the poem for treasuring children. (3mks)

.....
.....

.....
.....
.....

4. What is the meaning of the following lines: (4mks)

(a) “Only the one who is buried by his child, is the one who has truly borne a child.”

.....
.....
.....

(b) ‘On the day of our death, our hand cannot hold single cowry’.

.....
.....
.....

5. What three stylistic devices has the poet used in this poem? (6mks)

.....
.....
.....
.....
.....
.....
.....

6. With illustrations, identify the attitude of the persona towards ‘a child’ as expressed in the 1st six lines of the poem. (2mks)

.....
.....
.....

7. Give this poem a suitable title. (1mk)

.....
.....



Q.4 GRAMMAR (20 MARKS)

(a) Rewrite the following sentences according to the instructions given after each. (5 mks)

(i) a, grey, horse, racing, Atieno, small, young, bought. (Rearrange the words to make a meaning sentence)

.....
.....

(ii) He was kept awake all night by the barking of dogs. Change the sentence into active voice)

.....
.....

(iii) Peter is renovating his house so that he may sell it. (Rewrite using: ‘with a view...’)

.....
.....

(iv) Sunshine is the cleanest school in Kenya. (Rewrite using ‘cleaner’ instead of ‘cleanest’.)

.....
.....

(v) We can control the spread of cholera by educating the public. (Begin: the spread of ...)

.....
.....

(b) Complete each of the following sentences by using the correct form of the word in brackets. (6 mks)

(i) Saving the baby from the burning bus was a act. (hero)

(ii) The Minister expressed doubts about the of showing the film on children’s television. (suit)

(iii) The students usually write their in the afternoons. (compose)

(iv) That must be your (brother-in-law) house.

(v) These (teacher) phones were stolen.

(vi) Since some students were late for supper, they got the (little) share.

(c) Rewrite the following sentences to remove gender bias. (3 mks)

(i) My brother was appointed the chairman of the Board of Management in my school.

.....
.....

(ii) A teacher should give his students opportunities to develop their skills.

.....
.....

(iii) The fireman ran out of water at the scene of the fire.

.....
.....

(d) Fill in the blank spaces with the appropriate auxiliary verbs. (3mks)

(i) The child not play in the streets. (permission)

(ii) I not sleep five days ago. (past ability)

(iii) All students revise their roles regularly if they want to pass well. (compulsion)

(e) Rewrite the following sentences as instructed. (3mks)

(i) Mary will not be granted permission if she does not tell the truth. (Begin: Unless...)

.....
.....

(ii) She is very pretty. Begin: How...

.....
.....

(iii) Since she excelled in the National examination, the school should award no one else but

(Fill in the blank with the appropriate pronoun).

EXCELLING STUDENTS FORM 2 END TERM 1 SERIES 1 EXAMS

NAME:

SCHOOL:

DATE:..... ADM NO: SIGNATURE:.....

GEOGRAPHY (QUESTION PAPER)

FORM TWO

TIME: 2½ HOURS

INSTRUCTIONS:

- a). Write your name, class and Admission number in the spaces provided above.
- b). Answer all the questions
- c). All answers must be written in the space provided in this booklet.

SECTION A

1. a) What is the time at station Y 30°W when the time at point Z 20°E is 4.00 p.m. (2mks)

.....
.....
.....
.....

b) State three effects of the earth revolution. (3mks)

.....
.....
.....
.....
.....

2.a) What are the effects on the shape of the earth by the following forces. (3mks)

i) Centrifugal force

.....
.....
.....

ii) Centripetal force

.....

.....

.....

iii) Gravitation force

.....

.....

.....

b) Give the two reasons why the interior of the earth is still very hot. (2mks)

.....

.....

.....

.....

3. Stat three conditions for formation of dew. (3mks)

.....

.....

.....

.....

.....

4. State three characteristics of extrusive rocks. (3mks)

.....

.....

.....

.....

5.a) Give two reasons why it is necessary to study the plate tectonic theory. (2mks)

.....

.....

.....

.....
.....
.....
b) Name two types of tectonic plate boundaries. (2mks)

.....
.....
.....
SECTION B
6.a) Name three types of maps studied in geography. (3mks)

.....
.....
.....
b) State three ways of locating places on maps. (3mks)

.....
.....
.....
c) State three common types of marginal information found in the margin of a map sheet. (3mks)

.....
.....
.....
d) The following table shows rainfall and temperature of town X. Use the figures given to answer the questions that follow.

Month	J	F	M	A	M	J	J	A	S	O	N	D
Temp (°c)	23	24	26	28	29	28	26	26	26	30	28	25
Rainfall (mm)	3	0	3	1	18	500	720	408	300	70	15	0

Find:

i) The total annual rainfall. **(2mks)**

ii) The wettest month. **(1mk)**

iii) Annual range of temperature. **(2mks)**

iv) Mean annual rainfall. **(2mks)**

v) The hottest month. **(1mk)**

e) Name two instruments which could have been used to collect data in the table above. **(2mks)**

.....
.....
.....

7.a) Apart from the rift valley, name three other relief features that were formed as a result of faulting. **(3mks)**

.....
.....
.....
.....
.....
.....

b) With the aid of well labelled diagrams describe how a rift valley is formed by tensional forces. **(8mks)**

c) Students are planning to carry out a field study of a faulted landscape. State four reasons why it is important for them to carry out a pre-visit to the area of study. **(4mks)**

.....

.....

.....

.....

.....

.....

.....

8.a)i) Name three volcanic features found in the rift valley of Kenya. **(3mks)**

.....

.....

.....

.....

.....

ii) State two negative effects of vulcanicity in Kenya. **(2mks)**

.....

.....

.....

.....

iii) Describe the characteristics of a composite volcano. **(3mks)**

.....

.....

.....

.....

.....

.....

b)i) Name two types of earthquake waves. **(2mks)**

.....

.....

.....

.....

ii) State five ways in which the earth's crust is affected by earthquake. **(5mks)**

.....

.....

.....

.....

.....

.....

.....

.....

.....

.....

9.a) What is a rock? **(2mks)**

.....

.....

.....

.....

b) Classify the rocks listed in the table below.

(5mks)

Name of rock	Class
Marble	
Gneis	
Peridotite	
Sandstone	
Granite	

c) i) State two methods of estimating the age of rocks.

(2mks)

.....

.....

.....

.....

ii) State four factors that influence metamorphism in rocks.

(4mks)

.....

.....

.....

.....

.....

.....

d) State two characteristics of sedimentary rocks.

(2mks)

.....

.....

.....

.....

10.a)i) Give two examples of non-metallic minerals.

(2mks)

.....

.....

.....

ii) Name the minerals mined in each of the following places in East Africa.

(3mks)

- I. Kereita in Limuru Kenya –
- II. Geita in Tanzania –
- III. Kilembe in Uganda –

b) Describe how shaft mining is carried out.

(5mks)

.....

.....

.....

.....

.....

.....

.....

.....

.....

.....

c) Name three conditions necessary for the formation of petroleum.

(3mks)

.....

.....

.....

.....

.....

d) State two effects of mining on environment.

(3mks)

.....

.....

.....

.....

.....

.....

EXCELLING STUDENTS FORM 2 END TERM 1 SERIES 1 EXAMS

NAME:

SCHOOL:

DATE:..... ADM NO: SIGNATURE:.....

HISTORY AND GOVERNMENT (311)

FORM TWO (2)

Time: 2½ Hours

INSTRUCTIONS TO CANDIDATES

- A) This paper consists of three sections: **A, B** and **C**
- B) Answer **ALL THE QUESTIONS** from section **A** , **THREE QUESTIONS** from section **B** and **TWO QUESTION** from section **C** in the foolscaps provided.
- C) Students should check the question paper to ascertain that all the pages are printed as indicated and that no questions are missing.

FOR EXAMINER'S USE ONLY

SECTION A 1-17	SECTION B				SECTION C			
	18	19	20	21	22	23	24	

SECTION A (25MKS)-

Answer all questions in this section

- 1. Identify two forms of monarchical government (2mks)
- 2. Give one archaeological sources of History and Government (1mk)
- 3. Name one source of information on creation theory of man (1mk)
- 4. Give reason why Homo habilis is referred to as able man (1mk)
- 5. Identify two irrigation methods used in ancient Egypt (2mks)
- 6. Give two ways in which Land Enclosure system affected lives of small scale farmers (2mks)
- 7. What was the original homeland of the Eastern Cushites? (1mk)
- 8. State two natural factors that caused the Abagusii to migrate from Mount Elgon to their present land (2mks)
- 9. State two political functions of the council of elders among the Agikuyu during pre-colonial period (2mks)

10. Identify one community in Kenya which had a centralized system of ruling during the Pre-colonial period (1mk)
11. Give two evidence that show that Chinese traders reached the Kenyan coast before 1500AD (2mks)
12. Identify two main items of trade from the interior of Kenya during the long distance trade (2mks)
13. Name the town that was established by missionaries in Kenya as a center for freed slaves during the 19th century (1mk)
14. Define the term dual citizenship (1mk)
15. Name two symbols of national unity in Kenya (2mks)
16. State two features of local trade (2mks)
17. Give two means of water transport used during ancient time (2mks)

SECTION B (45MRKS)-Answer any three questions in this section

- 18a) Give three reasons why the early man lived in groups (3mks)
- b) Explain six advantages of discovery of fire by early man (12mks)
- 19a) Give three reasons for the migration of Plain Nilotes into Kenya (3mks)
- b) Describe the political organization of the Mijikenda during pre-colonial period (12mks)
- 20a) State five factors which influenced the Akamba to participate in the long distance trade (5mks)
- b) Explain six effects of the Portuguese rule on the Kenyan coast (12mks)
- 21a) Identify five problems faced by traders using barter system of trade (5mks)
- b) Discuss five effects of Trans-Saharan trade to the people of West Africa (10mks)

SECTION C (30MKS)-Answer any two questions in this section

- 22a) State five circumstances that can make a Kenyan citizen to be denied right to life (5mks)
- b) Explain six social rights of individual in Kenya (12mks)
- 23a) Give three economic factors that promote national unity in Kenya (3mks)
- b) Explain six importance of National Integration (12mks)
- 24a) Give three reasons that can make a registered person to lose citizenship in Kenya (3mks)
- b) Explain six factors that undermine national unity in Kenya (12mks)

EXCELLING STUDENTS FORM 2 END TERM 1 SERIES 1 EXAMS

NAME:

SCHOOL:

DATE:..... ADM NO: SIGNATURE:.....

HOME SCIENCE

Paper 1 (Theory)

TIME: 2 HOURS

Instructions to students

- a) Write your name, admission number and class in the spaces provided
- b) Sign and write the date of the examination in the spaces provided
- c) This paper consists of **three** sections: **A**, **B** and **C**
- d) Answer **all** the questions in sections **A** and **B** and any **two** questions from section **C**
- e) Answers to all the questions must be written in the spaces provided in the paper
- f) This paper consists of 13 printed pages
- g) Students should check the question paper to ascertain that all the pages are printed as indicated and that no questions are missing
- h) Students should answer the questions in English

For examiner's use only

Section	Question	Maximum Score	Student's Score
A	21	40	
B	22	20	
		20	
		20	
TOTAL SCORE		100	

SECTION A: (40 marks)

Answer ALL the questions in this section in the spaces provided.

1. Name two methods of steaming food. (1mk)

.....
.....
.....
.....

2. Mention two substances added to soap to improve efficiency. (1mk)

.....
.....
.....

3. Give two reasons for keeping drainage systems clean. (2mks)

.....
.....
.....

4. State two qualities of a good hand sewing needle. (2mks)

.....
.....
.....

5. Mention two challenges of concealed drainage. (2mks)

.....
.....
.....

6. Give two ways of buckets are used during laundry work. (1mk)

.....
.....
.....

7. What are communicable diseases? (1mk)

.....
.....
.....

8. List **four** stitches that can be used to neaten raw edges when stitching. (2mks)

.....
.....
.....
.....
.....
.....
.....

9. Identify **two** causes of food poisoning. (2mks)

.....
.....
.....
.....

10. Mention **two** disadvantages of using a metal spoon when cooking. (2mks)

.....
.....
.....
.....

11. Give **three** ways of avoiding skin diseases. (3mks)

.....
.....
.....
.....
.....

12. Suggest **three** ways of avoiding water pollution in Kenya. (3mks)

.....
.....
.....
.....

13. List **two** disadvantages of using iron sheets to construct a house. (2mks)

.....

.....

.....

.....

14. Suggest **three** reasons for proper drainage in a community. (3mks)

.....

.....

.....

.....

.....

15. Differentiate between regenerated and synthetic fibres. (2mks)

.....

.....

.....

.....

.....

16. Give **two** ways of discouraging breeding of pests in a home. (1mk)

.....

.....

.....

.....

17. Mention **three** qualities of a good kitchen bin. (3mks)

.....

.....

.....

.....

.....

18. Name **two** equipment used in drying clothes. (1mk)

.....

.....

.....

19. Give **three** ways of reducing malaria infections in the country. **(3mks)**

.....
.....
.....
.....

20. Differentiate between the two types of hardness in water. **(2mks)**

.....
.....
.....
.....
.....

21. Give **two** reasons for drying clothes. **(1mk)**

.....
.....
.....
.....

SECTION B: (20 marks)

COMPULSORY

Answer question 22 in the spaces provided after the question

22. You are taking care of your younger sibling who is suffering from flu.

a) Giving reasons, outline the procedure you will follow when laundering his/her white cotton handkerchief. **(9mks)**

b) Outline the procedure you will follow in cleaning the plain cemented floor in his/her bedroom. **(7mks)**

c) Give the procedure for cleaning the stainless steel spoon s/he has used in taking medication. **(4mks)**

EXCELLING STUDENTS FORM 2 END TERM 1 SERIES 1 EXAMS

JINA:

SHULE:

TAREHE:..... NAMBARI YA USAJILI: SAHIHI:.....

KISWAHILI

MUHULA WA KWANZA

KIDATO CHA PILI (2)

MUDA: SAA 2:00

Maagizo:

1. Jibu maswali yote.
2. Majibu yote yaandikwe katika nafasi ulizoachiwa katika karatasi hii ya maswali
3. Majibu yote **lazima** yaandikwe kwa lugha ya Kiswahili
4. Karatasi hii ina kurasa 10 zilizopigwa chapa
5. Watahiniwa lazima wahakikishe kuwa kurasa zote za karatasi hii zimepigwa chapa sawasawa na kuwa maswali yote yamo.

Matumizi ya mtahini pekee

SEHEMU	UPEO	ALAMA
A	15	
B	40	
C	10	
D	15	
JUMLA	80	

Soma taarifa ifuatayo kisha ujibu Maswali

Iwapo ungependa kuzijua rangi za seli ya Kituo cha Polisi cha Mtwapa, nenda ukamwulize Mzee Kajinga. Yeye anaweza hata kukueleza idadi ya *boriti* zilizoziua dari. Kwa hakika, hiyo ilikuwa mara yake ya kwanza na si ajabu ikawa ndiyo ya mwisho kulazwa korokoroni. Kosa lake? Huo ulikuwa mwiba wa kujidunga na haikuwa na haja ya kuambiwa pole.

Wananchi wazalendo waliungojea kwa hamu na ghamu usiku wa mkasha wa tarehe ishirini na tano, mwezi wa Agosti, mwaka wa 2009. Ulikuwa usiku wa sensa, wakati ambao Mzee Kajinga atahifadhi barabara katika kumbukumbu za bongo lake. Ni siku ambayo Mzee Kajinga alifanya *masihara* ya kujaribu kuupima urefu wa mkono wa serikali kwa kutumia rula ya akili zake fupi.

Usiku huo alitembelewa na mgeni kiamboni mwake. Bi. Tamara alimjia kwa shughuli za kitaifa za kusajili wananchi, yaani *sensa*. Binti huyu alibisha hodi mara ya kwanza. Kimya. Hodi ya pili ilimwamsha komba aliyekuwa amelala juu ya paa la nyasi la kijumba cha Mzee Kajinga. Kwa woga na *wahka* akarukia tagaa za mwembe uliokuwa karibu na hapo. Kumbe Mzee Kajinga hakuzisikia hodi hizo zote. Alikuwa *ameshazitandaa mbavu zake* zilizochoywa na kazi yake ya ukwezi. Hivyo alikuwa amelala usingizi wa pono. Chambilecho mwenyewe kila aendapo kulala huwaaga wenzake kwa msemu kuwa, “Ninaenda kumpa Mungu roho yake, akitaka atanirudishia asubuhi”. Hodi ya tatu ilibishwa na Mzee wa Kijiji, aliyekuwa amemwongoza Tamara kwa ufanisi wa shughuli hiyo. Hiyo ndiyo iliyomzindua Mzee Kajinga kwenye lepe lake la usingizi.

“Wewe ni shetani au nani usiku huu na unataka nini? Mbona kuninyemelea bila ya taarifa kama ziraili?” alinguruma Kajinga huku akiliwasha kopo lake la taa. Kibatari hicho kilitema moshi mwingi ungedhani gari la moshi la karne za Vasco Da Gama.

Hujambo? Mimi Ninaitwa Bi. Tamara na ni afisa wa shughuli za kusajili wananchi, yaani *sensa*. Tunaomba tukusajili.” Binti alimwomba radhi shaibu huyo. Mambo ya kuhesabiwa au kusajiliwa hayakuwa mageni kwa Mzee Kajinga. Habari hizo zilikuwa zimeenea vururu, mbiu zilipigwa, vyombo vya habari vyote vilitangaza na mabango yalitapakaa kila mahali kuhamasisha wananchi. Mbali na hivyo, Mzee Kajinga aliranda kijijini kote na kutangaza kwa kinywa pana kuwa asingethubutu kamwe kuhesabiwa kama mahabusu. Kisa na maana? Mjukuu wake aliyemaliza darasa la sita alienda kutafuta kazi ya kusajili kwa mkuu wa Kaunti, akakataliwa. Aliambiwa kuwa elimu yake ilikuwa haiafiki kuweza kukabiliana na kujaza *hojaji* za sensa. Jambo hilo *lilimgusa mfupa* Mzee Kajinga. Hakuelewa vile mjukuu wake angeweza kuachwa ilhali ni mchungaji hodari aliyeweza kuwahesabu ng’ombe, mbuzi na kondoo wake malishoni kila siku na hakuna hata siku moja wangerudishwa zizini na takwimu isiyo sahihi. Aliwaza kuwa Bwana kamishna alikuwa na upendeleo, ama wa kimbari, kidini, kiukoo, kikabila au kitabaka. “Na *kama alitaka mlungula* si angesema!” alisema Mzee Kajinga siku hiyo mjukuu wake aliporudi mikono mitupu na mabega yakiwa yamempwaya.

Alipotajiwa mambo ya kusajiliwa, alianza kufoka, “Nataka kuwaeleza na kisha muende mkawafahamishe wengine kuwa usingizi wangu ni mtamu kama ubwabwa wa mtoto, hivyo sitathubutu kuuwacha kwa shughuli za kuhesabiwa kama nazi”. Kwisha kusema hayo, aliufunga mlango wake. Nao kwani ulikuwa mlango? Lilikuwa bati kuukuu la kuzeekea lililokitwa

chini. Ufunguo wa ‘mlango’ huo ni kuliinua kwa mikono miwili na kulisogeza kando ili liache mwanya wa kupitia. Kufuli lake lilikuwa kuiegemezea kwa kinu kikuukuu bati hili ili lisianguke.

Bi. Tamara alimwomba tena kuwa angependa kumsajili. Hapo mzee alianza jeuri zake”, “Nani huyo amekupa kazi pevu hiyo mjukuu wangu? Kazi ya kuuhesabu ulimwengu mzima, utaiweza? Kwanza, nieleze sababu za kujitwika jukumu kubwa kama hilo. Mnahesabu watu ili muwaletee mpunga, *ngano* au mahindi?!”

“Mzee, hizi ni shughuli za Kitaifa. Azma yake ni kupanga mipango na mikakati ya maendeleo nchini,” alieleza Tamara.

“Nyinyi mna mipango gani? Mipango yote iliisha na mzungu. Tangu nitoke tumboni mwa mamangu wakati wa vita vya pili vya dunia, sijaona mpango wowote ule wenye maana kwa wanyonge. nimehesabiwa miaka yote hiyo, nimefaidika na nini? Mbona natafuta chakula kwa dhiki, nalala mahali pa mashaka na msamiati ‘raha’ umetolewa katika kamusi ya maisha yangu! Kisha mmekosa haya, adabu na heshima kuja kunibishia mlango wangu fakiri kama mimi kwa lengo la kuhesabiwa.. Sitaki na tokeni hapa kwangu!”

Mzee wa kijiji na afisa huyo wa sensa walijaribu kumwomba asajiliwe lakini hawakufua dafu. Mzee Kajinga alijaza pumzi kwenye mashavu yake ungedhani ni nyoka aina ya fira kumbe ndiyo njia pekee ya kibahaluli kama alivyo. Kisha *akajitoma ndani ya kibanda* chake na kuurejesha mlango wake. Mzee wa kijiji alijaribu kuligonga lile bati. Kumbe ilikuwa haljawekewa lile kufuli lake la kinu. Kwa bahati mbaya likaanguka na kumgonga Mzee Kajinga miguuni. Mtumee! Baada ya donda msumari wa moto. Mzee Kajinga *walimpanda wa kwao*. Alitoka shoti akiwa na mundu mkononi.

“Sasa mtanitambua, kwani kuhesabiwa ni hiyari au ni lazima?. Mnanidharau kwa vile ninaishi kwenye kibanda cha nyasi na nyinyi mnaishi maghorofani?. Hata Mnathubutu kuusukuma mlango wangu ili mnihesabu kwa nguvu sasa ninachukua hizo stakabadhi zenu nione kama mtaendelea kuwahesabu wangwana,” alisema Mzee Kajinga huku akimpokonya yule binti stakabadhi ya sensa na kuingia nayo mwake kibandani. Juhudi za Bi. Tamara na mzee wa Kijiji za kumrai arudishe stakabadhi ya sensa ziligonga mwamba.

“Hii ni shughuli ya serikali, mzee usiichezee”, alisema binti huyo wa sensa.

“Sasa, nakutuma uende kuiambia hiyo serikali yenu kuwa Kajinga amekataa upuuzi wa kuhesabiwa. Kisha huyo anayelitwa serikali imfikie sana. Akome kuja kumsajili Kajinga. Atie akilini kuwa mimi si nazi, si maembe, si korosho, si kuku wala ng’ombe wa kuhesabiwa. Na kama huyo, sijui aitwa serikali, sirikali au pilipili kali ana haja sana, ya kunihesabu, mwambie aje tunyooshane misuli. Haya paondokeni kiamboni pangu, *gud nit* kalaleni unono!” Mzee Kajinga alihitimisha uneni wake kwa maneno ya Kiingereza bila kufahamu amekosea.

Walipoyaona mambo hayo yamewapita kimo, afisa huyo wa sensa pamoja na Mzee wa Kijiji waliingia kwa mtandao na kumpigia simu Chifu Kitauro. Chifu naye hakukawia. Papo hapo akamjulisha kamishna wa kaunti. Kabla ya mate yaliyotemwa ardhini kukauka, lori lililojaa askari lilipiga kona na kuhepana na minazi pale kiamboni pa Mzee Kajinga. Kijiji

kizima kiliamshwa na kelele za bureki, mabuti ya askari ishirini, milio ya marungu kugongana na ngao, fiirimbi zilizopulizwa pamoja na mngurumo wa lori lililoacha thureya ya taa na kumulika kijiji kizima. Kiama kilishuka kijijini humo. Kibanda cha Mzee Kajiga kilizingirwa kila upande na kigaro cha askari hata ungedhani ni kisiwa cha Migingo. Askari hao walitulia tuli wakisubiri amri itoke kwenye kinywa cha Mkuu wa Wilaya.

“Mimi ni kamishna wa kaunti, nakuomba Mzee Kajinga ujisalimisha. Isitoshe, hiyo stakabadhi ya sensa utoke nayo bila kuiharibu. Ninakupa dakika tano ufanye hivyo,” aliamrisha kamishna wa kaunti.

“Na mimi naitwa Kajinga Matandiko Maguvuguvu. Sijisalimishi. Stakabadhi sikupi. Fanya uwezalo. Na ninakupa sekunde tano upaondoke pangu nyumbani,” alirudisha jawabu.

Ingawa utani huruhusiwa, ule wa Mzee Kajinga ulivuka mipaka, kamishna wa kaunti aliona kuwa, ‘mwenda wazimu akikupiga kofi nawe mtie konde, ndipo atakuogopa’. Amri ilimtoka. Kwa muda wa sekunde haba, Mzee Kajinga alikuwa yuko juu hewani. Hakuna aliyekumbuka kama alikuwa amevaa nguo. Stakabadhi zilipatikana salama u salmini na kurejeshewa Bi. Tamara. Kajinga alibebwa hobelahobela huku mvua ya makofi ikimnyea hadi kwenye lori. Alilala seli.

Mzee Kajinga aliachiliwa na kuridi nyumbani kwa masharti kuwa angemtafuta bibi huyo wa sensa pamoja na Mzee wa Kijiji awaombe msamaha na kisha *asajiliwe*. Aliporudi *alipigwa na butaa*. Hakuiona nyumba yake ila nyasi za paa zilitapaka kila mahali. Aliona fito za viambaza, mikoko, udongo uliokuwa kuta na vyombo vya jikoni vilitupwa kila upande. Hakufahamu kibarua kilichopita cha askari kumtoa humo kibandani hakikuwa cha pesa nane. Sijui kama wakati wa kisirani hicho chote mzee huyu kalewa au kasumbuliwa na pepo fulani au ni mbumbumbu.

Maswali:

a) Taja kichwa mwafaka cha kifungu hiki **(alm1)**

.....
.....

b) Kwa nini mzee Kajinga alitaka kukatiza shughuli za sensa. **(alm1)**

.....
.....
.....

c) Eleza umuhimu wa kuwepo kwa Mzee wa Kijiji. **(alm1)**

.....
.....
.....

d) Taja matukio yenye kuonyesha kuwa Mzee Kajinga alikuwa mtu jeuri. **(alm2)**

.....

.....

.....

.....

e) Ni nini umuhimu wa sensa kwa taifa? **(alm1)**

.....

.....

.....

f) Eleza sababu alizozitoa mzee Kajinga za kukataa kusajiliwa. **(alm2)**

.....

.....

.....

.....

g) Taja methali moja anayoweza kuambiwa Mzee Kajinga kutokana na yaliyomfika katika kifungu hiki. **(alm2)**

.....

.....

.....

.....

h) Eleza maana ya misemo ifuatayo kama ilivyotumiwa katika ufahamu. **(alm2)**

Walimpanda wa kwao

.....

.....

Kama alitaka mlungula

.....

.....

i) Eleza maana ya maneno yafuatayo kama yalivyotumiwa katika habari hii. **(alm3)**

Sensa

.....

.....

.....

Hojaji

.....
.....
.....

Wahka

.....
.....
.....

SEHEMU YA B: MATUMIZI YA LUGHA (alama 40)

a) Andika maneno yenye sauti zifuatazo. (alm2)

kipasuo sikhuna cha midomoni, irabu ya mbele juu, kipasuo sikhuna cha ufizi, irabu ya chini kati.

.....
.....

nazali ya ufizi, irabu ya kati chini, irabu ya kati chini, nazali ya midomoni

.....
.....
.....

b) Weka shadda panapofaa katika neno lifuatalo. (alm1)

Mkuu

.....
.....

c) Bainisha miundo ya silabi katika neno chuchumaa (alm1)

.....
.....
.....

d) Nomino zifuatazo zimo katika ngeli gani? (alm2)

i) Dawati.....

ii) Kipusa.....

e) Akifisha sentensi ifutayo. (alm2)
usinipandishe mori alifoka mama

.....
.....

f) Tunga sentensi mbili kuonyesha matumizi mbalimbali ya neno *kama*. (alm2)

.....
.....
.....
.....

g) Tofautisha maana za sentensi zifuatazo (alm2)

i) Viongozi wangepukana na ufisadi taifa lingepata maendeleo makubwa.

.....
.....

ii) Viongozi wangeliepukana na ufisadi taifa lingalipata maendeleo makubwa.

.....
.....

h) Andika sentensi yenye muundo ufuatao (alm2)

S-KN(N+V)+KT(T+E)

.....
.....
.....

i) Tunga sentensi moja katika wingi kuonyesha hali ya mazoea. (alm2)

.....
.....
.....

j) Andika maana mbili zinazojitokeza katika sentensi ifuatayo. (alm2)

Mwalimu aliwasomea hadithi ya kuvutia

.....
.....
.....

k)

i) Kirai ni nini?

(alm1)

.....
.....
.....

ii) Tunga sentensi na uonyeshe kirai nomino na kirai kihusishi

(alm2)

.....
.....
.....

l) Mwindaji alimuua swara.

Mwindaji alimuua simba.

Uganisha kwa kutumia kiunganishi sembuse.

(alm2)

.....
.....
.....

m) Tambua mofimu katika neno

(alm3)

aliyeombewa

.....
.....
.....
.....

n) Tunga sentensi moja kutofautisha maneno yafuatayo.

(alm2)

Vua

Fua

.....
.....
.....
o) Kanusha sentensi ifuatayo; (alm1)

Wewe unaimba vizuri.

.....
.....

p) Onyesha matumizi ya **ni** katika sentensi ifuatayo (alm2)

Aliyeniokoa ni afisa wa polisi

.....
.....
.....

q) Onyesha viwakilishi katika sentensi ifuatayo. (alm2)

Wote wawili walichaguliwa na huyo.

.....
.....
.....

r) Andika katika usemi halisi (alm2)

Mwalimu aliwaambia wamwone kwa adhabu jioni hiyo

.....
.....

s) Andika sentensi ifuatayo upya kwa kutumia kinyume cha maneno yaliyopigiwa mstari (alm2)

Wanafunzi wenye bidii wamesifiwa na mwalimu mkuu

.....
.....
.....
.....
.....

t) Tumia mzizi -zee katika sentensi kama

(alm2)

i) nomino

.....
.....

ii)kivumishi

.....
.....

u) Eleza maana ya usemi ufuatao.

(alm1)

Enda mrama

.....
.....
.....

SEHEMU C: ISIMU JAMII

(alama 10)

Soma kauli na ujibu maswali;

A:.....ng'ara, ng'ara, ng'ara kwa bei nafuu. Bei ya kutupa. Mama hiyo rinda ni original kutoka Marekani na meli

B: Ngapi hii?

A: *Rwabe* pekee

B: Nina *one fifty* na siongezi kitu.

A: Hatuwezi kukosana. Ongeza kitu kidogo kastoma.

1.a) Hili ni sajili ipi? Kwa nini?

(alm2)

.....
.....
.....

.....

.....

.....

.....

.....

.....

.....

.....

.....

.....

2. i) Hapo zamani za kale.....
Bainisha kipengele hiki katika utambaji wa hadithi **(alm1)**

.....

.....

.....

ii.) Kipengele ulichotaja katika 2 i) kina umuhimu gani katika utambaji? **(alm4)**

.....

.....

.....

.....

.....

.....

.....

.....

.....

.....

iii) Andika mifano mingine miwili ya kipengele hiki **(alm2)**

.....

.....

.....

.....

.....

.....

.....

.....



EXCELLING STUDENTS FORM 2 END TERM 1 SERIES 1 EXAMS

NAME:

SCHOOL:

DATE:..... ADM NO: SIGNATURE:.....

MATHEMATICS (121)

FORM TWO (2)

TIME: 2 ½ HOURS

Instructions to candidates

1. Write your name, admission no. and class in the spaces provided.
2. Sign and write the date of examination in the spaces provided above
3. The paper contains two sections; Section I and II.
4. Answer all questions in Section I and II
5. All answers and working must be written on the question paper in the spaces provided below each question.
6. Show all the steps in your calculations, giving your answers at each stage in the spaces provided below each question
7. KNEC Mathematical tables may be used, except where stated otherwise
8. Silent or non-programmable calculators **SHOULD NOT** be used

FOR EXAMINER'S USE ONLY

SECTION I

1	2	3	4	5	6	7	8	9	10	11	12	13	14	15	16	TOTAL

SECTION II

17	18	19	20	21	TOTAL

GRAND TOTAL

SECTION I (50 MARKS)

1. Using mathematical tables; find

(4mks)

$$(0.0546)^{0.5} + (2/4.327)^2$$

2. Solve the equation;

(3mks)

$$\frac{x-2}{3} - \frac{3-x}{4} = \frac{x-2}{2}$$

3. 3g of metal A of density 2.7g/cm^3 is mixed with 2.4dm^3 of metal B of density 4.8g/cm^3 . Determine the density of the mixture.

(3mks)

4. Korir is now four times as old as his daughter and six times as old as his son. Twelve years from now, the sum of the ages of his daughter and son will differ from his age by 9 years. Determine present ages. **(3mks)**

5. Convert $2\frac{2}{3}$ into an improper fraction. **(3mks)**

6. Evaluate $\frac{1}{3}$ of $(2\frac{3}{4} - 5\frac{1}{2}) \times 3\frac{6}{7} \div \frac{9}{4}$ **(3mks)**

7. Evaluate ; **(3mks)**

$$\left(\frac{2}{5}\right)^{-3} \times \left(\frac{4}{5}\right)^2 \times (32)^{2/5}$$

8. Cynthia exchanged Ksh.600,000 to Sterling pounds. After settling the bills worth £1200, she changed the balance to Euros. She then purchased goods worthy 200 Euros. Using the exchange rates below, calculate her balance in Kenyan shillings. **(3mks)**

	Buying (Ksh)	Selling (Ksh)
1 Sterling pound	114.20	114.50
1 Euro	101.20	101.30

9. Find the equation of line whose gradient is $-\frac{3}{2}$ and y – intercept is 2. Give the answer in the form $y = mx + c$. **(4mks)**

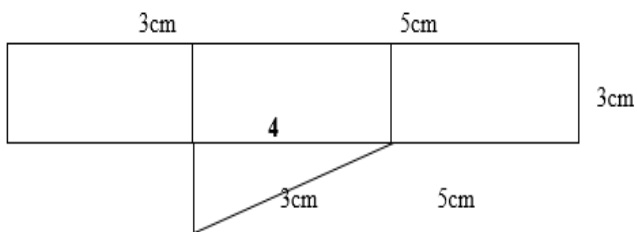
10. In a month of March a motorbike salesman sold 3 motorbikes, one at Kshs 150,000, the second at Kshs 120,000 and the other Kshs 100,000. If he is paid a salary of Ksh 15,000 and a commission of 10% how much did he get during the month of March? **(3mks)**

11. A cylindrical tank has a diameter of 700cm and can hold 120,000l of water. What is the height of the water tank in meters to four significant figures? (Take $\pi = \frac{22}{7}$) **(3mks)**

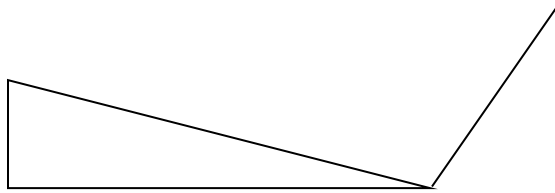
12. Two similar solids weigh 625g and 40g respectively. If the surface area of the smaller solid is 4.8cm^2 . Determine the surface area of the larger one. **(3mks)**

13. Evaluate $\frac{-10 - (-6) \times (-6) \div -2 + (-18)}{-8 + (-6) \div (-2) \times 2}$ **(3mks)**

14. The figure below shows the sketch of a net of a solid (measurement in centimeters)



Below is part of a sketch of the solid whose net is shown above. Complete the sketch of the solid showing the hidden edges with broken lines. **(4mks)**



15. Given that $(5m - 2n) : (2m - n) = 7 : 5$. Find the ratio $m : n$. **(2mks)**

16. The size of an exterior angle is $\frac{1}{3}$ of the interior angle of a regular polygon. Determine the number of sides of the polygon. **(3mks)**

SECTION II (50 MARKS)

Answer all the questions from this section

17. Ariell is a sales executive earning a salary of Kshs. 20,000 and a commission of 8% for the sales excess of Kshs. 100,000. If in May he earned a total of Kshs, 48,000 in salaries and commission

a. Determine the amount of sales he made in that month. **(4mks)**

b. If the total sales in the months of June and July increased by 18% and then dropped by 30% respectively. Calculate.

i. Ariell's commission in the month of June. **(3mks)**

ii. His total earnings in the month of July. **(3mks)**

18. Town B is 20km N60°W from village A. Town B is 25km 040° from town C. Village D is due East of town C and due South of village A

(a) Using a scale 1:500,000 draw a diagram showing a relative position of town B, town C, village A and village D **(4mks)**

(b) Determine;

(i) Distance between village A and town C **(2mks)**

(ii) Distance between town C and village D **(2mks)**

(iii) Compass bearing of town C from village A **(1mk)**

(iv) Compass bearing of village D from town B **(1mk)**

19. A Rhombus has its vertices as PQRS. The co-ordinates of the vertex P and Q of the rhombus are P(-1, 3) and Q(2, 4). The diagonal QS and PR meet at point M. Given that the equation of the line PR is $y = x + 4$.

a) Find the equation of the diagonal QS. **(1mk)**

b) Find the co-ordinates of the mid-point M of QS. **(2mks)**

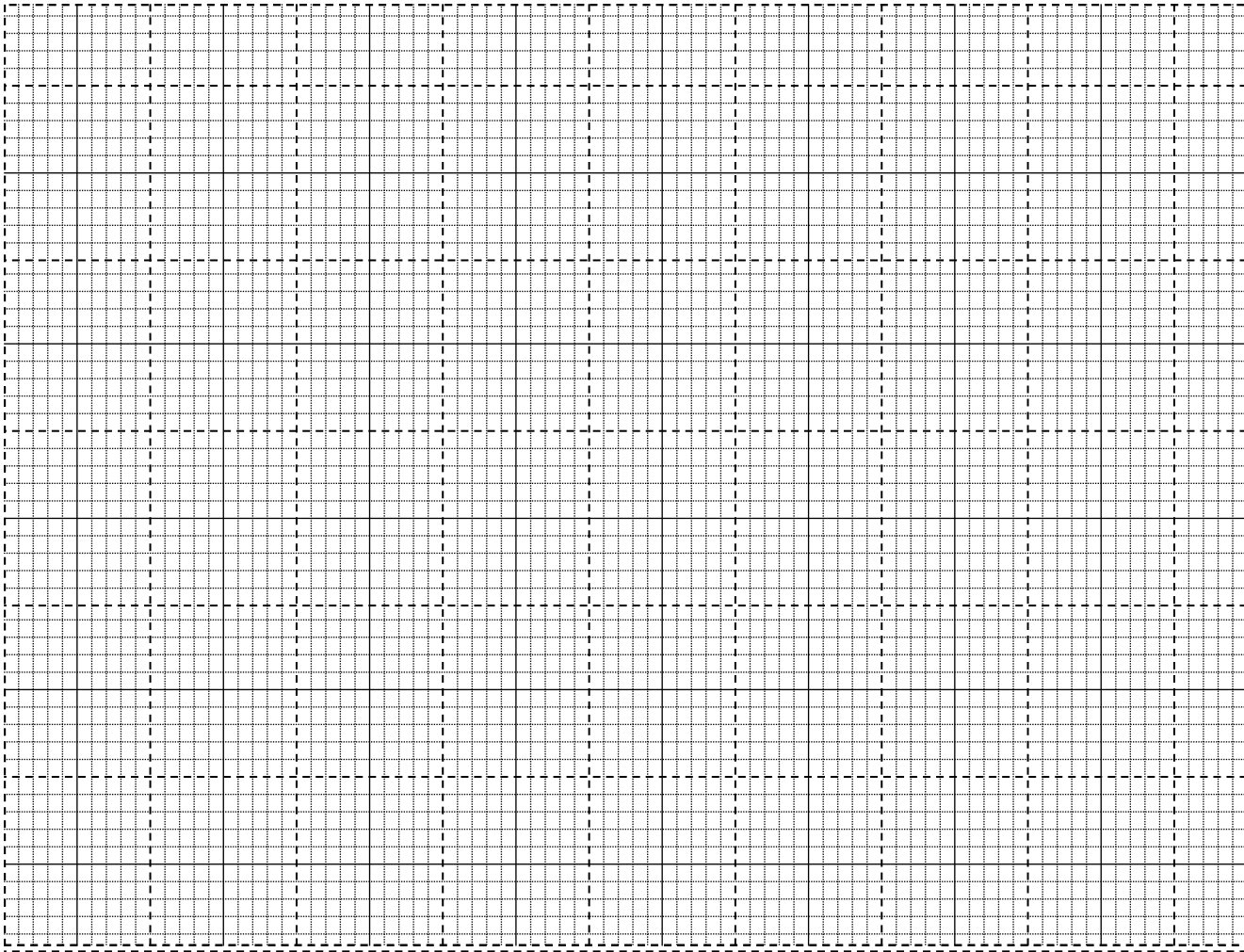
c) Find the co-ordinates of the points R and S. **(4mks)**

d) Calculate the length of diagonal PR. **(3mks)**

20. A triangle has vertices A(-4, -1), B(-1, -3), C(-2, -1).

a) Draw triangle ABC on the graph below.

(1mk)



b) Plot the image $A^1B^1C^1$ of triangle ABC under reflection in the line $y = -x$.

(3mks)

c) Plot the image $A^{11}B^{11}C^{11}$ of triangle $A^1B^1C^1$ under rotation of $+90$ about the origin.

(3mks)

d) Plot the image $A^{111}B^{111}C^{111}$ of $A^{11}B^{11}C^{11}$ under enlargement scale factor -2 and centre $(1, 0)$.

(3mks)

21. The ratio of men to women in a self-help group is 8:13. Two more men joined the group while 5 women left it. The new ratio of men to women in the group is 7:10.

a) Find the original:

i) Number of men in the group

(4mks)

ii) Number of women in the group

(2mks)

iii) Original number of members in the group.

(2mks)

b) Determine the new number of members in the group.

(2mks)

EXCELLING STUDENTS FORM 2 END TERM 1 SERIES 1 EXAMS

NAME:

SCHOOL:

DATE:..... ADM NO: SIGNATURE:.....

PHYSICS (232) QUESTION PAPER

FORM TWO (2)

INSTRUCTIONS TO CANDIDATES:

- (a) Write your **Name** and **Adm .Number** in the spaces provided **above**.
- (b) **Sign** and write the **date** of examination in the spaces provided **above**.
- (c) This paper consists of **two** Sections; **A** and **B**.
- (d) Answer **ALL** the questions in Sections **A** and **B** in the spaces provided. (e)

All workings must be clearly shown.

FOR EXAMINER'S USE ONLY:

Section	Question	Maximum Score	Candidate's Score
A	1 – 11	25	

SECTION A (25 MARKS)

1. Write down the vernier calliper's reading shown in figure 1 below:

(1mk)

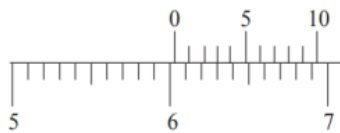


Figure 1

2. Figure 2 below represents a simple gas thermometer set-up by a student.

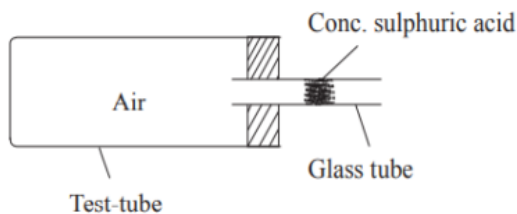


Figure 2

(a) State any one adjustment to increase the sensitivity of the apparatus.

(1mk)

.....
.....
.....

(b) State one advantage of gas thermometer over mercury in glass thermometer.

(1mk)

.....
.....
.....

3. The pressure at the top of a mountain is found to be 700 mmHg. Calculate the height of the mountain given that the density of mercury is $13\,600\text{ kg/m}^3$, density of air 1.25 kg/m^3 and the pressure at sea level is 760 mmHg.

(3mks)

4. Figure 3 below shows a paint brush dipped in a clear paint and when removed from the paint

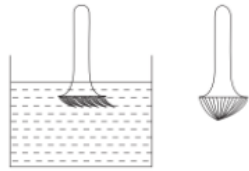


Figure 3

Explain the shape of the bristles.

(2mks)

.....

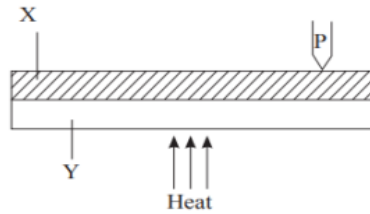
.....

.....

.....

5. State two factors that determine pressure in a liquid at a particular place.

(2mks)



.....

.....

.....

.....

6. Two metals X and Y welded together are heated so that they break the contact shown at P in the figure 4.

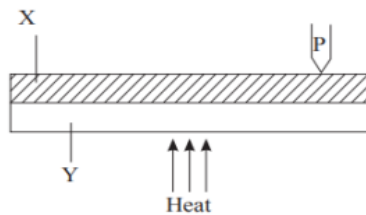


Figure 4

Explain how the contact is broken.

(2mks)

.....

.....

.....

.....

.....

7. Explain how a positively charged electroscope can be used to determine the charge on charged rod. (2mks)

.....
.....
.....
.....

8. State two advantages of the lead-acid accumulator over the dry cell. (2mks)

.....
.....
.....
.....

9. A soft iron rod and a steel bar are placed in turns in a solenoid connected as in figure 5 below.

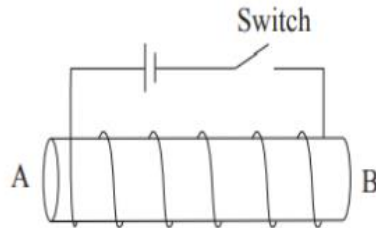


Figure 5

(i) Show the polarity of end B of the coil when the switch is closed. (1mk)

(ii) Describe what happens to the two rods when current is switched on for some time, then turned off. (2mks)

.....
.....
.....
.....

10.(a) State the effect on the image formed by a pinhole camera if:

(i) The size of the pinhole is increased. (1mk)

.....
.....
.....

(ii) The object is moved closer to the pinhole. (1mk)

.....
.....
.....

(iii) The screen is moved farther from the pinhole

(1mk)

.....

.....

.....

.....

11. Describe experiments to determine the density of a liquid

(3mks)

.....

.....

.....

.....

.....

SECTION B (55 MARKS)

Answer ALL the questions in this section in the spaces provided

12. The diagram below shows two steel pins held at the poles of two magnets.

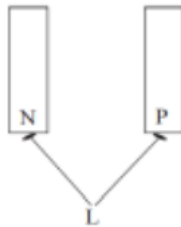


Figure 6

(a) State the polarity at:

(1mk)

P _____

b) (i) By what process are the pins magnetized?

(1mk)

.....

.....

(ii) State the law illustrated by the two pins.

(1mk)

.....

.....

.....

(c) The figure 7 below shows a U-shaped magnet with a plotting compass placed between its poles. The arrow at the compass represents its north pole.



Figure 7

(i) State the polarities at A and B. (1mk)

.....

.....

.....

.....

(ii) Draw on the diagram to indicate the magnetic field pattern around the U-shaped magnet. (1mk)

(d) The graph below shows the variation of magnetic strength against magnetizing current.

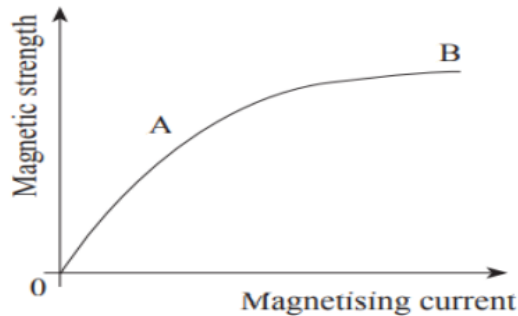


Figure 8

(i) Explain the sections OA and AB. (2mks)

.....

.....

.....

.....

.....

(ii) On the same axes, sketch the graph of a harder magnetic material. Explain your answer. (2mks)

13.(a) The figure 9 below shows a dry cell

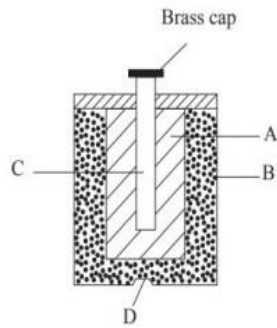


Figure 9

(i) Name the parts labelled A, B and C. (3mks)

.....

.....

.....

.....

(ii) Explain the purpose of parts A, C and D in the cell. (3mks)

.....

.....

.....

.....

.....

(iii) State the polarity of end marked D. (1mk)

.....

.....

.....

(iv) Explain why the terminal voltage of the cell is likely to be less than its EMF when in use. (1mk)

.....

.....

.....

(c)(i) A lead-acid cell is rated 50 Ah and supplies a steady current of 2 A. What does the term '50 Ah' mean?(3mks)

14. The figure 10 below shows a hydraulic brake system for a car. The area of the master piston A is 0.75cm^2 while the slave pistons attached to the tyres P, Q, R and S are of area 3cm^2 each. A force of 500 N is applied on the master cylinder.

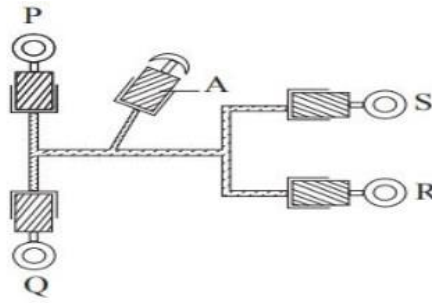


Figure 10

(a) Define pressure and give its SI units. (2mks)

.....

.....

.....

(b) (i) State the principle of transmission of pressure in liquids. (1mk)

.....

.....

.....

(ii) State two important properties of the fluid used in the system. (2mks)

.....

.....

.....

(iii) Explain why the slave cylinders are of the same size. (1mk)

.....

.....

.....

(c) Calculate:

(i) The pressure generated in the master cylinder. (2mks)

(iii) Braking force on each tyre.

(3mks)

15. The motion of smoke particles enclosed in a smoke cell can be studied using the set-up shown below

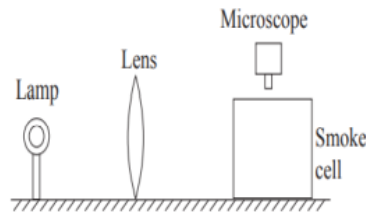


Figure 11

(a) What observation is made in the smoke cell?

(2mks)

.....

.....

.....

.....

(b) (i) Explain what happens in the smoke cell.

(2mks)

.....

.....

.....

.....

(ii) What is the purpose of the microscope?

(1mk)

.....

.....

.....

(a) State two factors that affect the motion of the particles in the smoke cell.

(2mks)

.....

.....

.....

.....

(b) The diagram shows different states of matter:

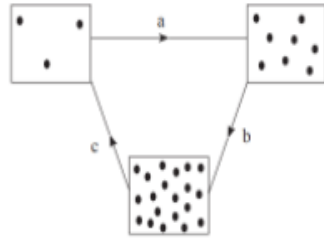


Figure 12

(i) Name the processes labelled a and c.

(2mks)

(ii) Explain why solids have a definite shape but liquids take the shape of the container in which they are put.

(2mks)

16. The figure 13 below shows a liquid in a container

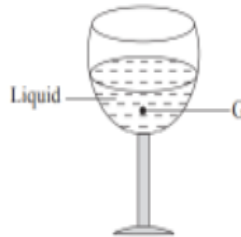


Figure 13

(a) Explain what happens to the stability of glass when more liquid is added.

(2mks)

(b) If the glass is empty, what is its state of equilibrium?

(1mk)

.....
.....
(c) A cylindrical block of metal with a curved section is placed to rest in two different positions as shown in the following figure 14.

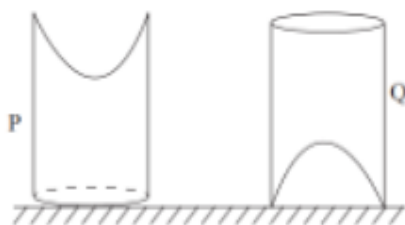


Figure 14

State and explain which of the positions is more stable. (2mks)

.....
.....
.....
.....

(d) A non- uniform meter rule weighing 0.9 N is balanced horizontally on a sharp pivot placed at the 40 cm mark, when a load of 1.26 N is placed at the 32 cm mark. Determine the position of the center of gravity of the meter rule. (3mks)

(e) Suppose the student was given a flat irregularly-shaped object shown in figure 15, how would the center of gravity be determined? (3mks)



Figure 15

(f) What modifications are introduced to the buses to ensure stability?

.....

.....

.....

.....

.....

**CALL AMOBI GROUP OF EXAMINERS @
0743 333 000 OR 0706 851 439 TO
ACQUIRE :**



Mid/End Term Exams
Pre-mock/Mock Exams
KCSE Prediction Exams
Call: 0706 851 439



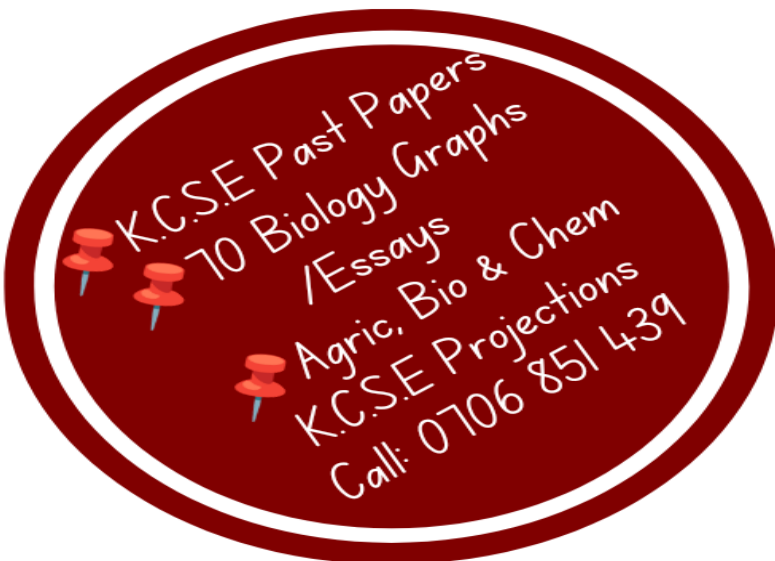
FI-F4 All Subjects
Updated Notes
Set Books Guides
Set Books Qsns
Call: 0743 333 000



Updated
Schemes of Work
Subject Syllabus
FI-F4 Topical Qsns &
MS
Call: 0743 333 000



Acted Set Books
Videos
Poetry/Ushairi Qsns
Holiday Assignments
Call: 0706 851 439



KCSE Past Papers
70 Biology Graphs
/Essays
Agric, Bio & Chem
KCSE Projections
Call: 0706 851 439



All Subjects Collections of :
KCSE Predictions/Mocks
Forecast/Projections
Call: 0743 333 000